

PLAN VIEW
SCALE 1:750

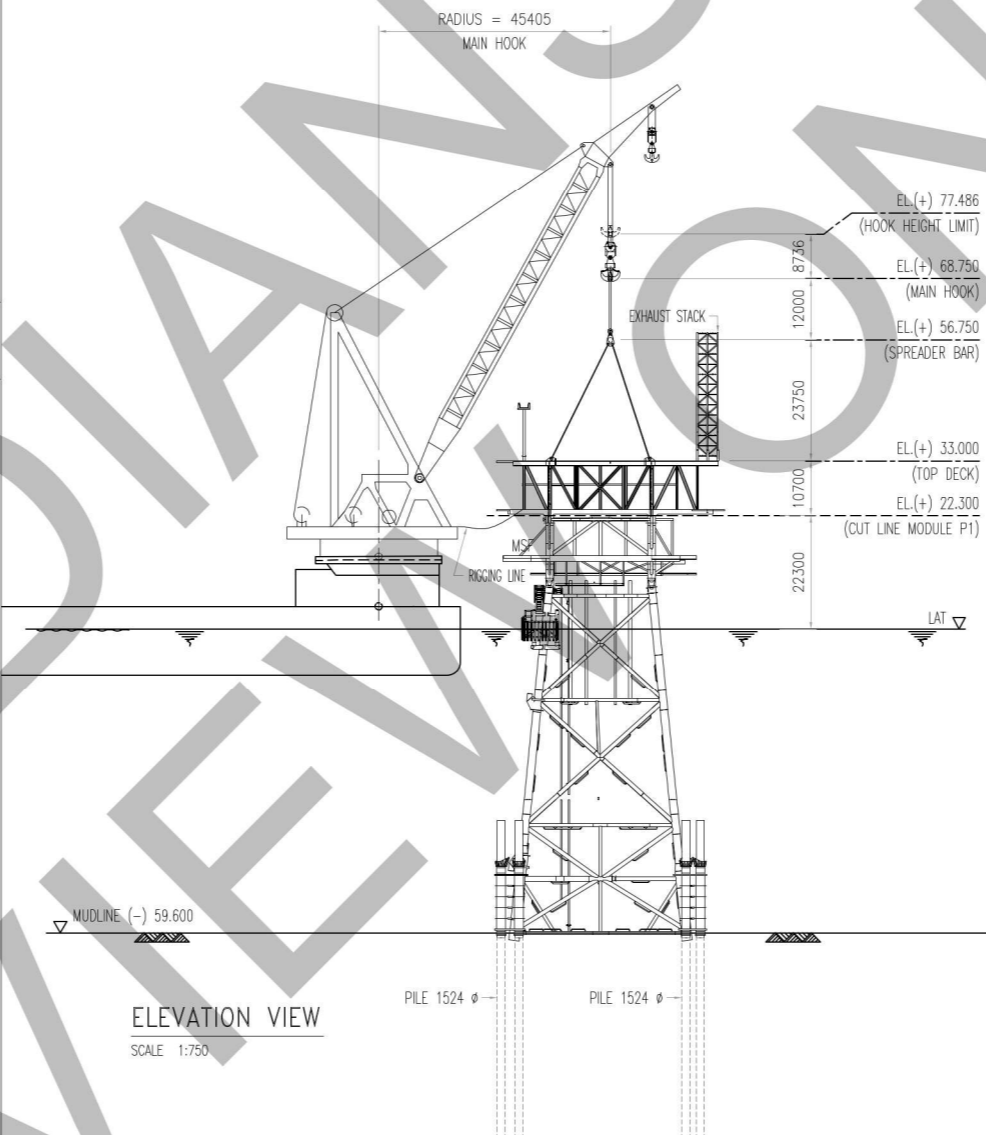
STEP-1

1. POSITION HLV AT POP PLATFORM LOCATION.
2. PREPARED ALL NECESSARY TOOLS & EQUIPMENT.
3. INSTALL SCAFFOLDING UNDERNEATH LOCATION (CONNECTION P1 & MSF).
4. INSTALL CONNECTION RIGGING LINE.
5. PREPARED LIFT-UP (MODULE P1).

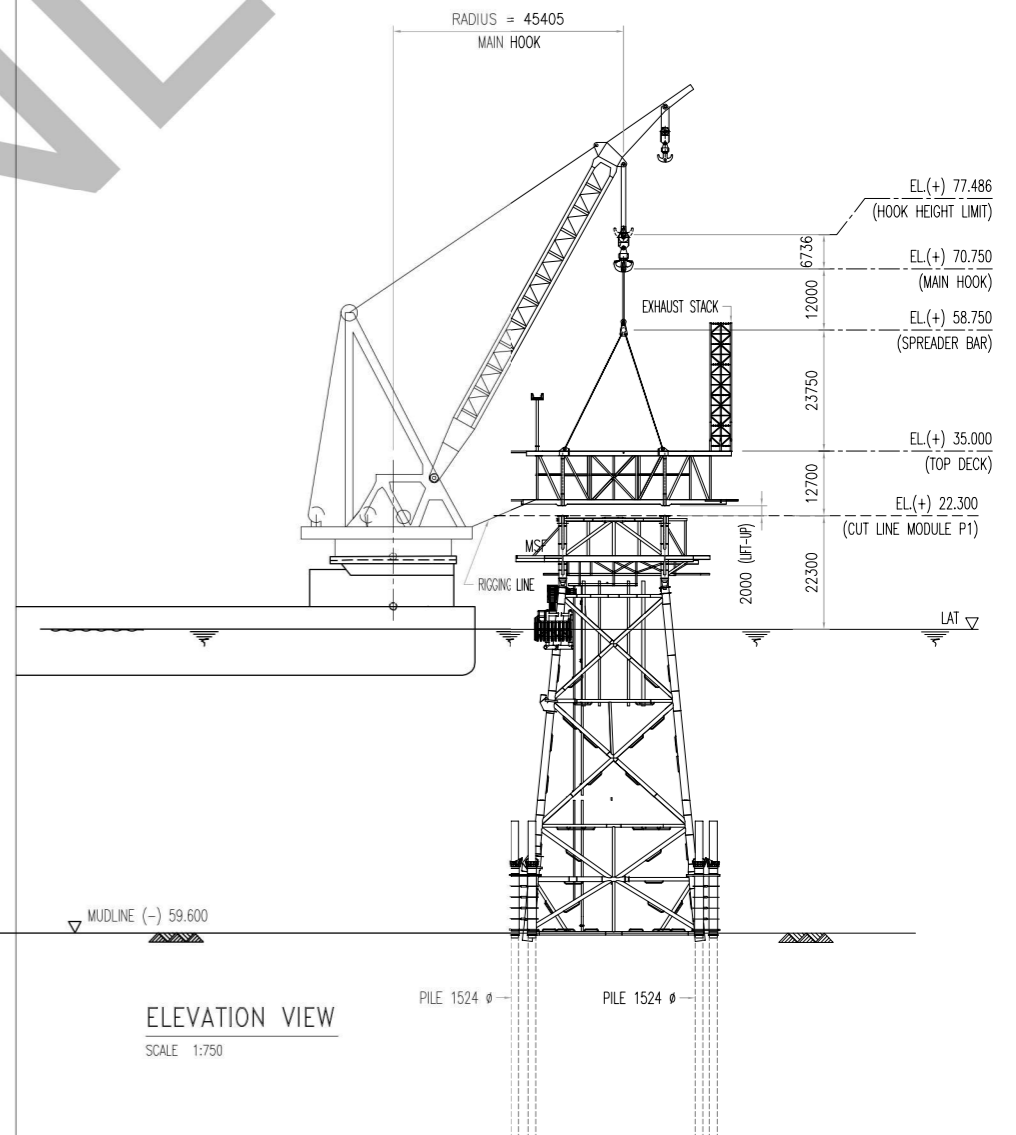
STEP-2

1. CUT REMOVE WELDING BETWEEN BOTTOM PLATE P1 AND TOP OF MSF FRAME (4 LOCATIONS).
2. LIFT-UP SLOWLY (MODULE P1) CLEAR FROM MSF DECK.

POP MODULE P1 FACTORED DRY WEIGHT = 846.32 MT		ALLOWABLE LIFTING CAPACITY OF HLV MAIN HOOK (RADIUS 45405)		
STATIC CRANE LOAD (INCLUDED LIFTING GEAR)	895 MT	STATIC CRANE CAPACITY	1285 MT	UC = 0.696
DYNAMIC CRANE LOAD (WITH D.A.F 1.2)	1074 MT	DYNAMIC CRANE CAPACITY	1349 MT	UC = 0.796



ELEVATION VIEW
SCALE 1:750



ELEVATION VIEW
SCALE 1:750

SEQUENCE DECOMMISSIONING/LIFTING MODULE		
NO.	MODULE	REFER. DRAWING
1	POP FLARE BOOM	-
2	POP TOPSIDE MODULE P2	-
3	POP-WHP INTERCONNECTION BRIDGE	-
4	POP TOPSIDE LIVING QUARTER & HELIDECK	-
5	POP TOPSIDE MODULE P1	- THIS DRAWING
6	POP TOPSIDE MODULE MSF	-
7	POP JACKET TOP SECTION & BOTTOM SECTION	-
8	WHP TOPSIDE	-
9	WHP JACKET TOP SECTION & BOTTOM SECTION	-

NOTES :
1. ALL DIMENSIONS ARE IN MILLIMETERS AND ALL ELEVATIONS ARE IN METER W.R.T M.S.S UNLESS NOTED OTHERWISE.
2. THE HLV & BARGE WHICH ARE USED FOR THE SEQUENCE ARE PRELIMINARY ONLY & NEED FURTHER VERIFICATION FOR THE SCENARIO/SEQUENCES BY CONTRACTOR WITH THE CHOSEN MARINE SPREADS ON DECOMMISSIONING PHASE. ON THIS FEED PHASE, HLV EN3000 IS USED AS THE BASIS OF THIS DRAWING

NO.	REVISION	DESCRIPTION	DRN.	CHK.	LEAD ENG.	PROJ. APPR.	REVR.	APPR.
0	-	APPROVED FOR CONSTRUCTION	-	-	-	-	-	-
0A	-	APPROVED FOR CONSTRUCTION (DRAFT)	-	-	-	-	-	-
C	-	ISSUED FOR APPROVAL	-	-	-	-	-	-
B	-	ISSUED FOR REVIEW	-	-	-	-	-	-

DRAWING No.	TITLE	REV.	DATE	DESCRIPTION	DRN.	CHK.	LEAD ENG.	PROJ. APPR.	REVR.	APPR.
	WHP - POP HLV AND CARGO BARGE ANCHORS PATTERN DRAWING									

PROJECT :
PROVISION OF RUBY FACILITIES ABANDONMENT SITE RESTORATION (ASR) FEED
TITLE :
PQP TOPSIDE MODULE P1
LIFTING AND EMPLACEMENT SEQUENCE DRAWING

SCALE	CONTRACT NO.	DRAWING NO.	SHEET NO.	REV.
1:750	-	-	1 OF 2	0

STEP-3

1. SWING BOOM AND ROTATE (MODULE P1) ONTO GRILLAGES CARGO BARGE.
2. CONTROL RIGGING LINE DURING THE PROCESS ROTATE (MODULE P1).

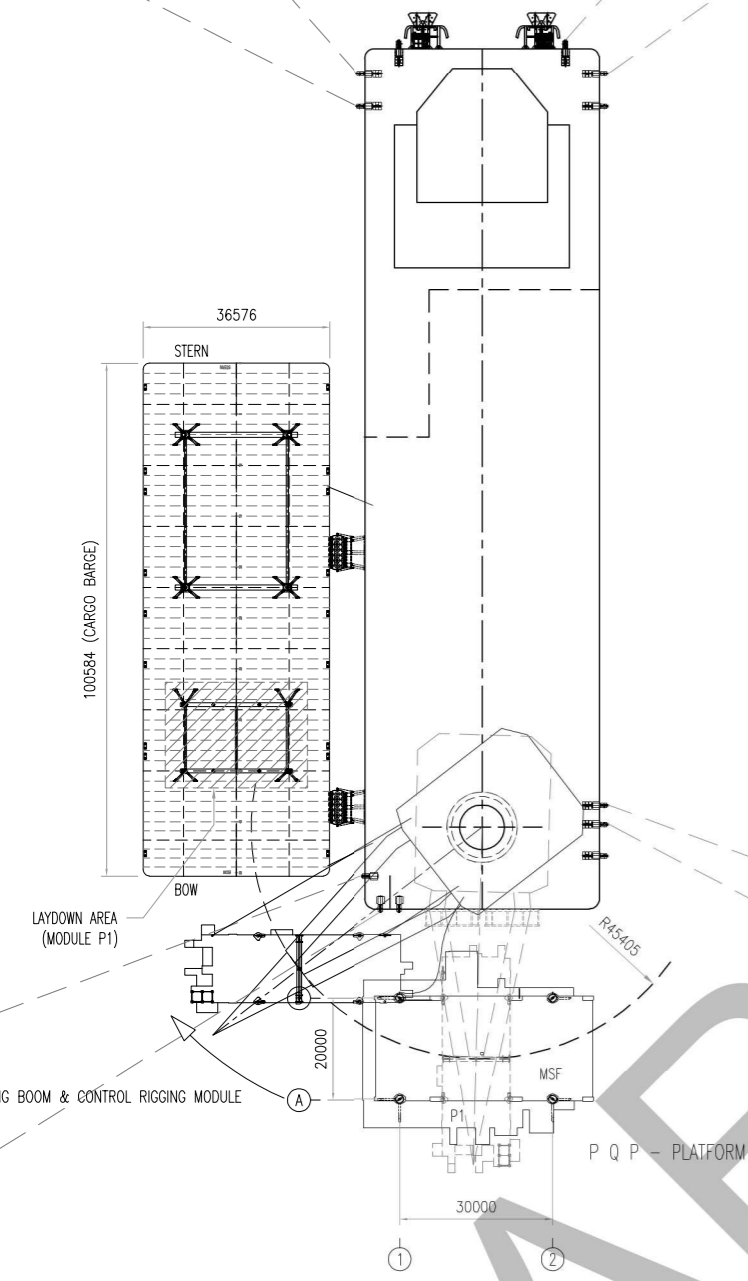
STEP-4

1. SET-DOWN (MODULE P1) ONTO SUPPORT MODULE/GRILLAGES ON CARGO BARGE.
2. ADJUST (MODULE P1) ON POSITION GRILLAGES.

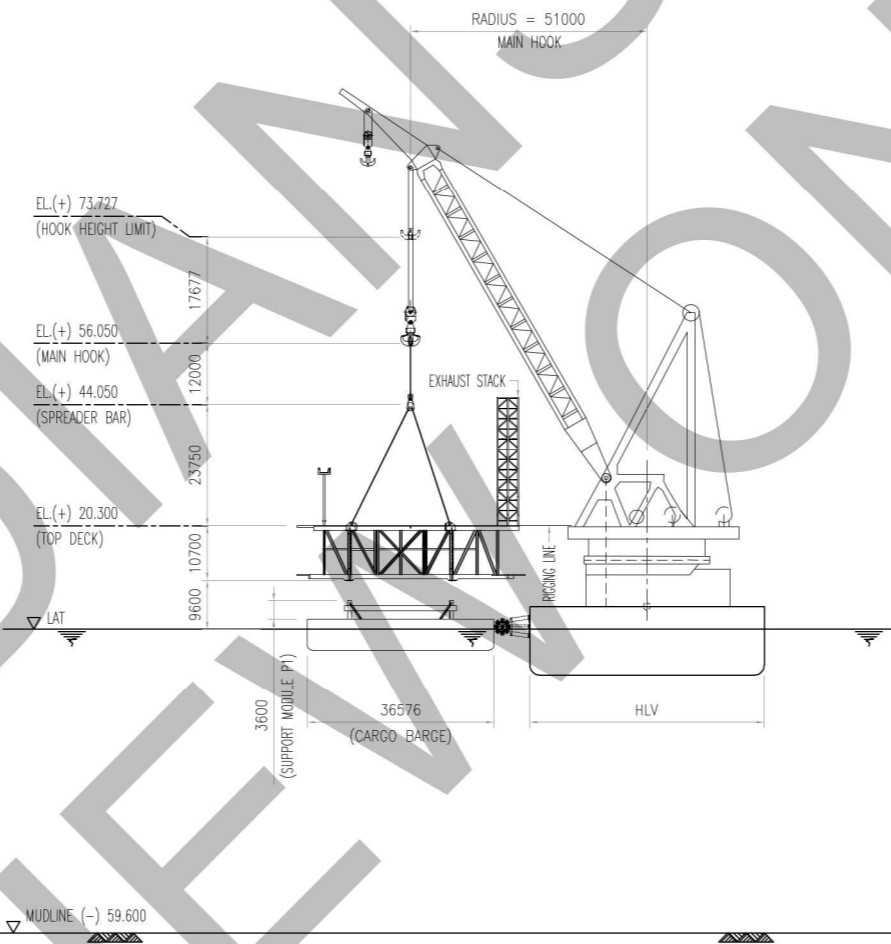
STEP-5

1. WELD BOTTOM PLATE P1 TO TOP OF PLATE GRILLAGES/SUPPORT MODULE FRAME.
2. INSTALL SEA-FASTENING FOR RELEASE LIFTING GEAR.

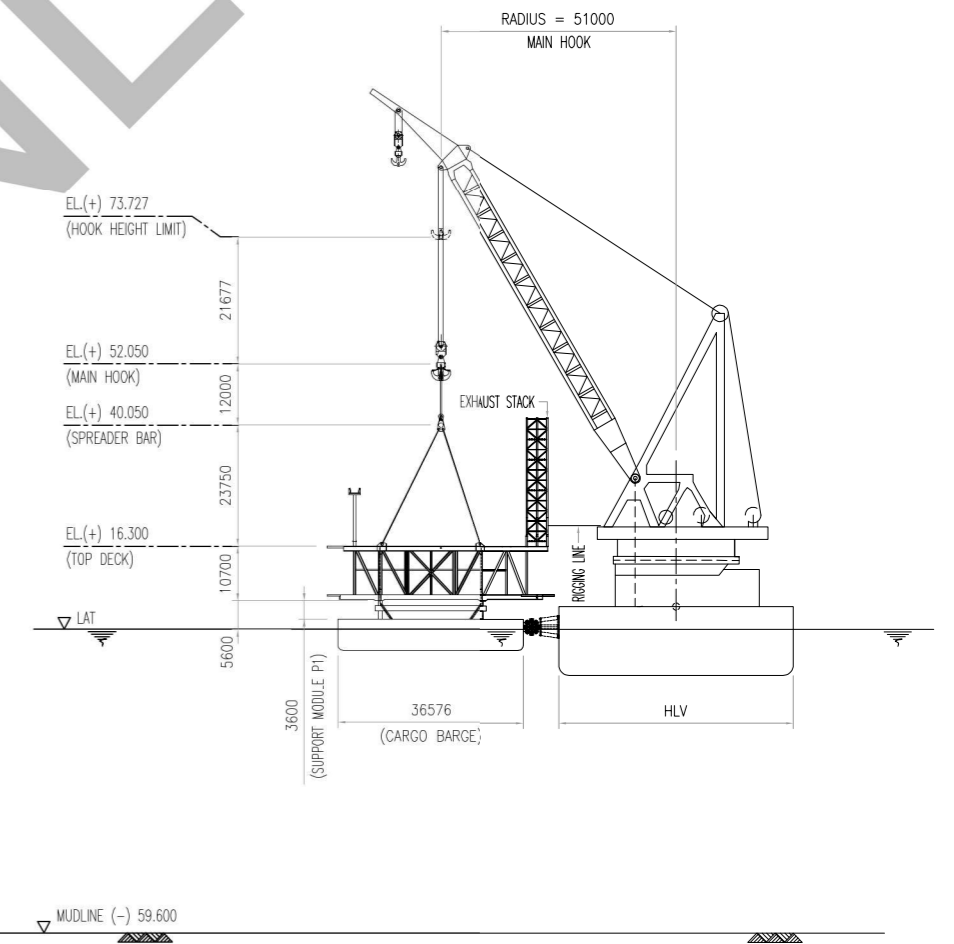
POP MODULE P1 FACTORED DRY WEIGHT = 846.32 MT		ALLOWABLE LIFTING CAPACITY OF HLV MAIN HOOK (RADIUS 51000)		
STATIC CRANE LOAD (INCLUDED LIFTING GEAR)	895 MT	STATIC CRANE CAPACITY	1059 MT	UC = 0.845
DYNAMIC CRANE LOAD (WITH D.A.F 1.2)	1074 MT	DYNAMIC CRANE CAPACITY	1112 MT	UC = 0.966



PLAN VIEW
SCALE 1:750



ELEVATION VIEW
SCALE 1:750

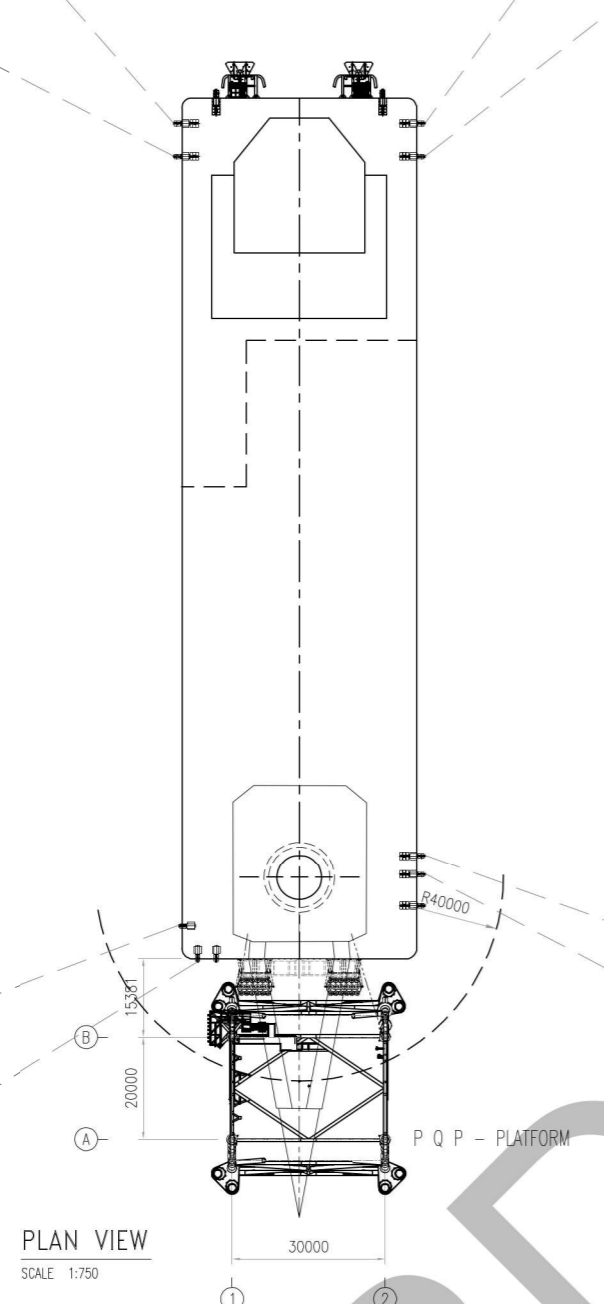
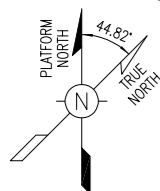


ELEVATION VIEW
SCALE 1:750

- NOTES :**
1. ALL DIMENSIONS ARE IN MILLIMETERS AND ALL ELEVATIONS ARE IN METER W.R.T M.S.S UNLESS NOTED OTHERWISE.
 2. THE HLV & BARGE WHICH ARE USED FOR THE SEQUENCE ARE PRELIMINARY ONLY & NEED FURTHER VERIFICATION FOR THE SCENARIO/SEQUENCES BY CONTRACTOR WITH THE CHOSEN MARINE SPREADS ON DECOMMISSIONING PHASE. ON THIS FEED PHASE, HLV EN3000 IS USED AS THE BASIS OF THIS DRAWING.

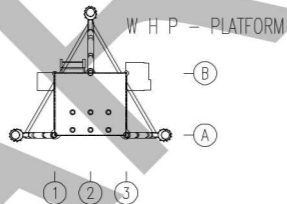
REV.	DATE	DESCRIPTION	DRN.	CHK.	LEAD ENG.	PROJ. APPR.	REVR.	APPR.	
0	-	APPROVED FOR CONSTRUCTION	-	-	-	-	-	-	
0A	-	APPROVED FOR CONSTRUCTION (DRAFT)	-	-	-	-	-	-	
C	-	ISSUED FOR APPROVAL	-	-	-	-	-	-	
B	-	ISSUED FOR REVIEW	-	-	-	-	-	-	
DRAWING No.		TITLE		REVISION		PTSE		MESL	
-		WHP - POP HLV AND CARGO BARGE ANCHORS PATTERN DRAWING		-		-		-	

PROJECT : PROVISION OF RUBY FACILITIES ABANDONMENT SITE RESTORATION (ASR) FEED				
TITLE : PQP TOPSIDE MODULE P1 LIFTING AND EMPLACEMENT SEQUENCE DRAWING				
SCALE 1:750	CONTRACT NO. -	DRAWING NO. -	SHEET NO. 2 OF 2	REV. 0



PLAN VIEW
SCALE 1:750

SEQUENCE DECOMMISSIONING/LIFTING MODULE		
NO.	MODULE	REFER. DRAWING
1	POP FLARE BOOM	-
2	POP TOPSIDE MODULE P2	-
3	POP-WHP INTERCONNECTION BRIDGE	-
4	POP TOPSIDE LIVING QUARTER & HELIDECK	-
5	POP TOPSIDE MODULE P1	-
6	POP TOPSIDE MODULE MSF	-
7	POP JACKET TOP SECTION & BOTTOM SECTION	-
8	WHP TOPSIDE	-
9	WHP JACKET TOP SECTION & BOTTOM SECTION	-

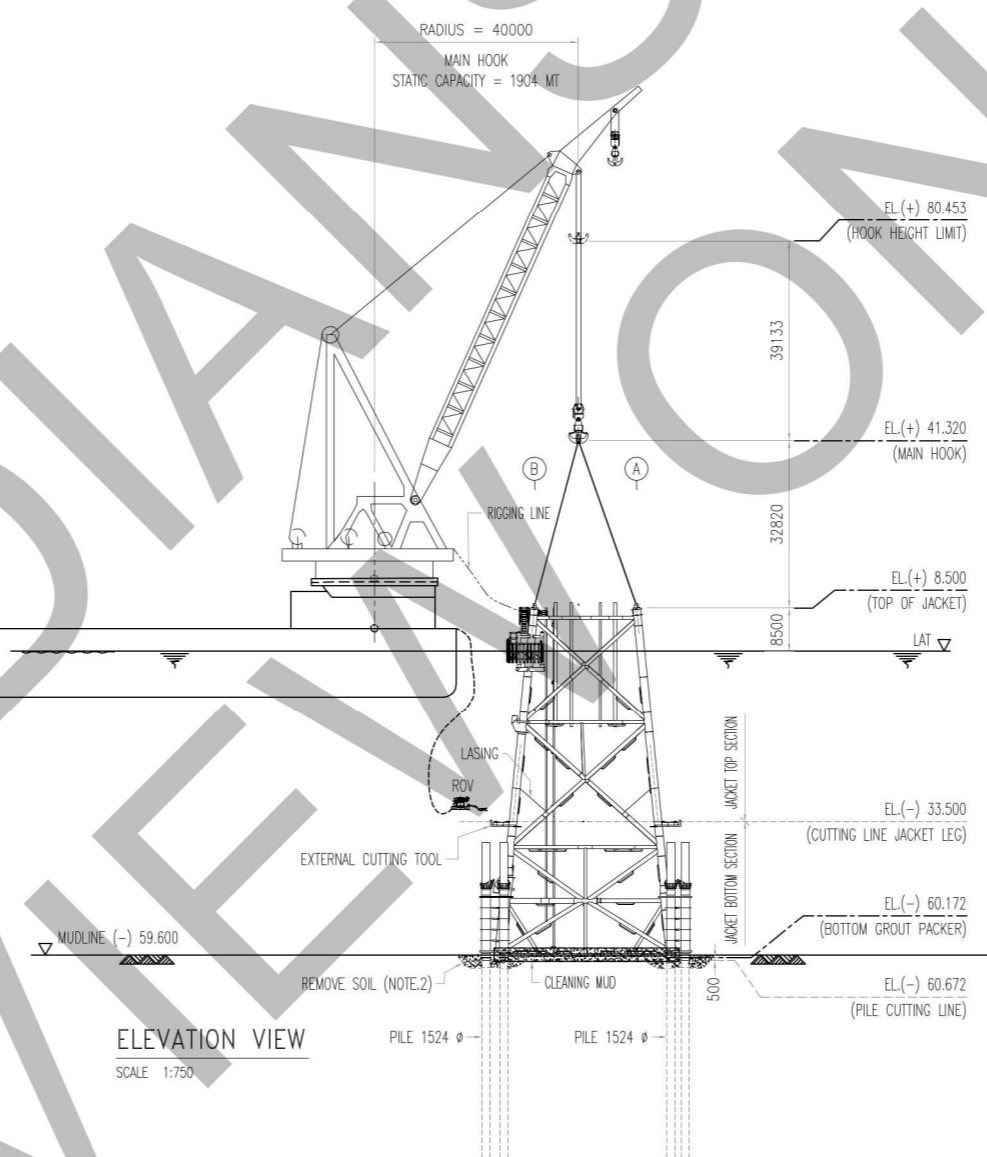


← THIS DRAWING

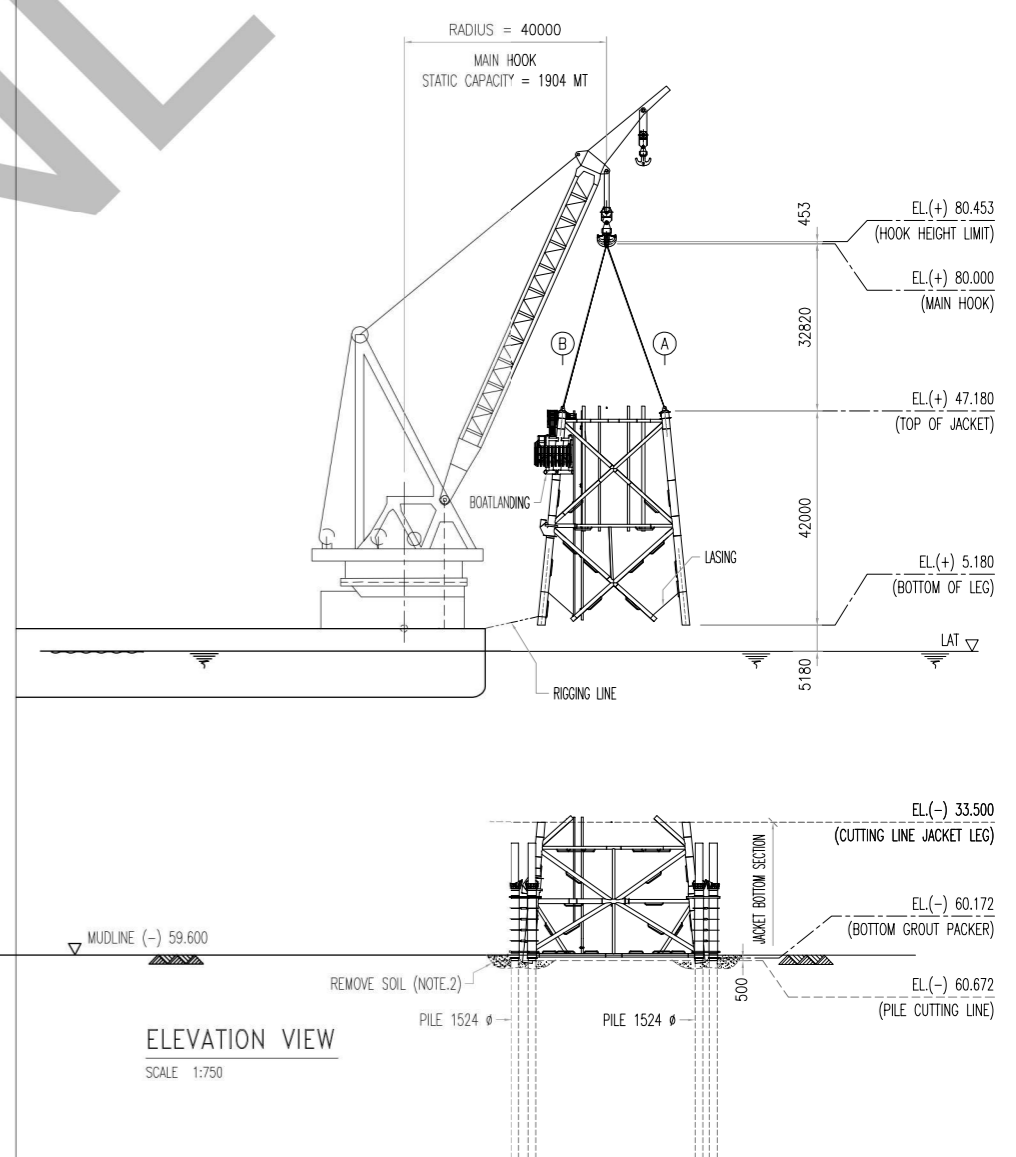
- STEP-1**
1. POSITION HLV AT POP PLATFORM LOCATION.
 2. PREPARED ALL NECESSARY TOOLS & EQUIPMENT.
 3. CLEANING MUD ABOVE MUDMAT FRAMING BEFORE CUTTING JACKET.
 4. REMOVE SOIL BEFORE CUTTING PILES.
 5. INSTALL SCAFFOLDING AT LOCATION FOR INSTALL INTERNAL LIFTING TOOL (ILT).
 6. INSTALL LASING (WIRE SLING & CLIPS) ON JACKET DIAGONAL BRACE TO JACKET LEGS.
 7. SET-UP INTERNAL LIFTING TOOL AT TOP OF JACKET.
 8. LOWERING THE CRANE (MAIN HOOK) TO ABOVE (JACKET).
 9. SET-UP EXTERNAL CUTTING TOOL ON JACKET LEGS & DIAGONAL BRACE.
 10. CUT DIAGONAL BRACE AT EL. (-) 32.500.
 11. CUT JACKET LEGS (4 LOCATION) AT EL.(-) 33.500.
 12. PREPARED LIFT-UP (JACKET TOP SECTION).

- STEP-2**
1. LIFT-UP SLOWLY (JACKET TOP SECTION) CLEAR ABOVE M.S.L.
 2. INSTALL RIGGING LINE ON BOTTOM JACKET LEGS (2 LOCATION).

POP JACKET UPPER SECTION FACTORED DRY WEIGHT (EXCLUDE LIFTING GEAR) = 1014.91 MT		ALLOWABLE LIFTING CAPACITY OF HLV MAIN HOOK (RADIUS 40000)	
STATIC CRANE LOAD	1129.28 MT	STATIC CRANE CAPACITY (OVER STERN)	1904 MT UC = 0.593
DYNAMIC CRANE LOAD (WITH D.A.F 1.15)	1298.68 MT	DYNAMIC CRANE CAPACITY	1999.20 MT UC = 0.650



ELEVATION VIEW
SCALE 1:750



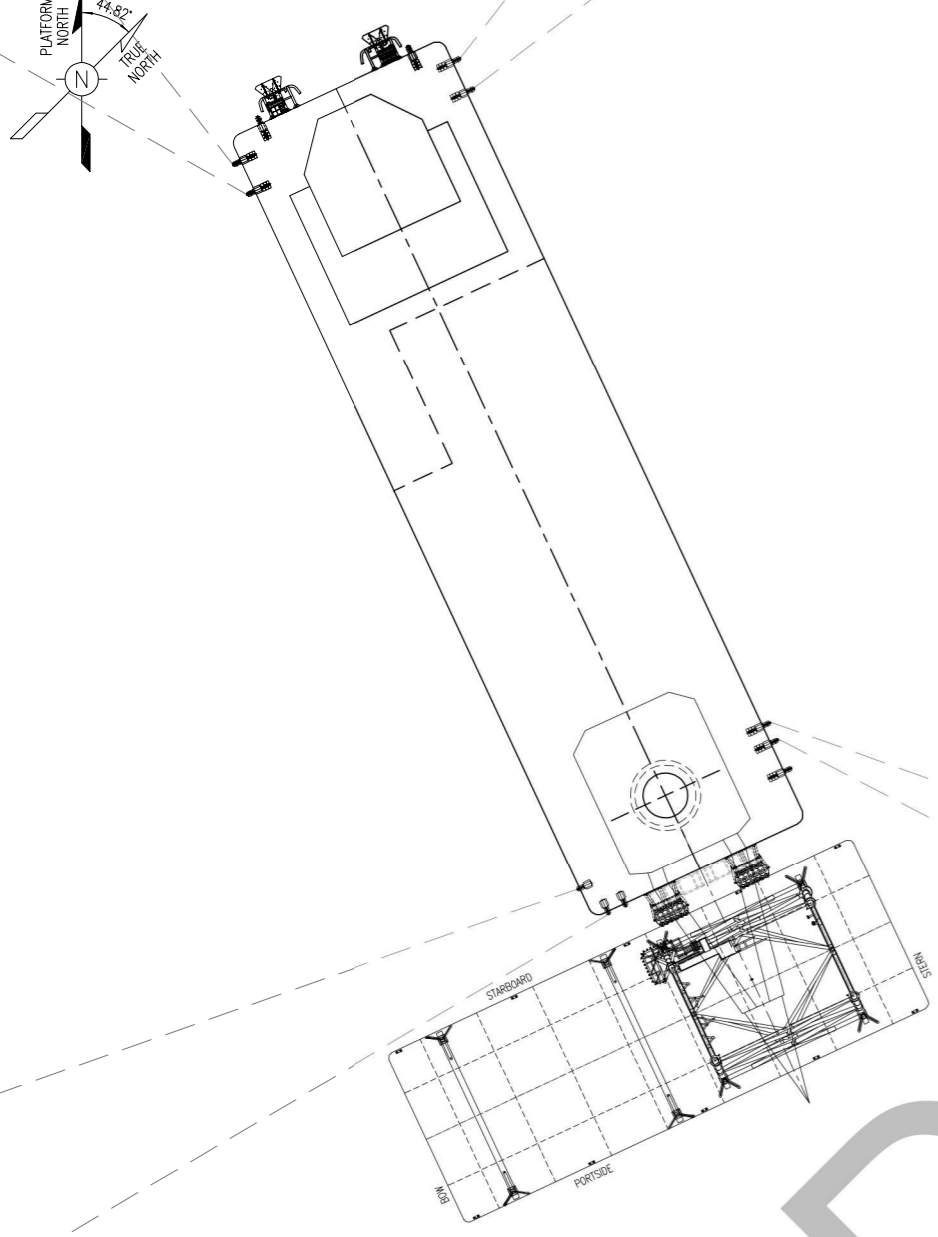
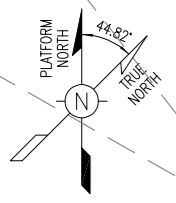
ELEVATION VIEW
SCALE 1:750

NOTES :

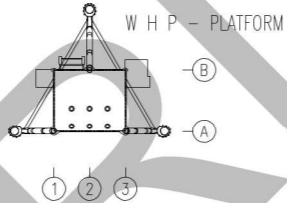
1. ALL DIMENSIONS ARE IN MILLIMETERS AND ALL ELEVATIONS ARE IN METER W.R.T M.S.S UNLESS NOTED OTHERWISE.
2. REMOVE SOIL BEFORE CUTTING PILES.
3. THE HLV & BARGE WHICH ARE USED FOR THE SEQUENCE ARE PRELIMINARY ONLY & NEED FURTHER VERIFICATION FOR THE SCENARIO/SEQUENCES BY CONTRACTOR WITH THE CHOSEN MARINE SPREADS ON DECOMMISSIONING PHASE. ON THIS FEED PHASE, HLV EN3000 IS USED AS THE BASIS OF THIS DRAWING.

REV.	DATE	DESCRIPTION	DRN.	CHK.	LEAD ENG.	PROJ. APPR.	REVR.	APPR.
0	-	APPROVED FOR CONSTRUCTION	-	-	-	-	-	-
0A	-	APPROVED FOR CONSTRUCTION (DRAFT)	-	-	-	-	-	-
C	-	ISSUED FOR APPROVAL	-	-	-	-	-	-
B	-	ISSUED FOR REVIEW	-	-	-	-	-	-

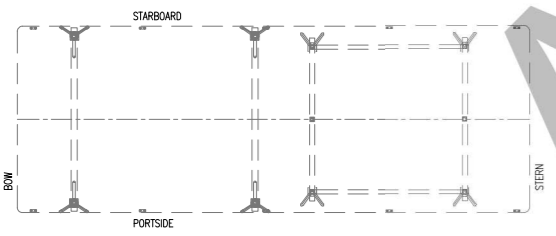
PROJECT : PROVISION OF RUBY FACILITIES ABANDONMENT SITE RESTORATION (ASR) FEED				
TITLE : PQP JACKET LIFTING AND EMPLACEMENT SEQUENCE DRAWING				
SCALE 1 : 750	CONTRACT NO. -	DRAWING NO. -	SHEET NO. 1 OF 4	REV. 0



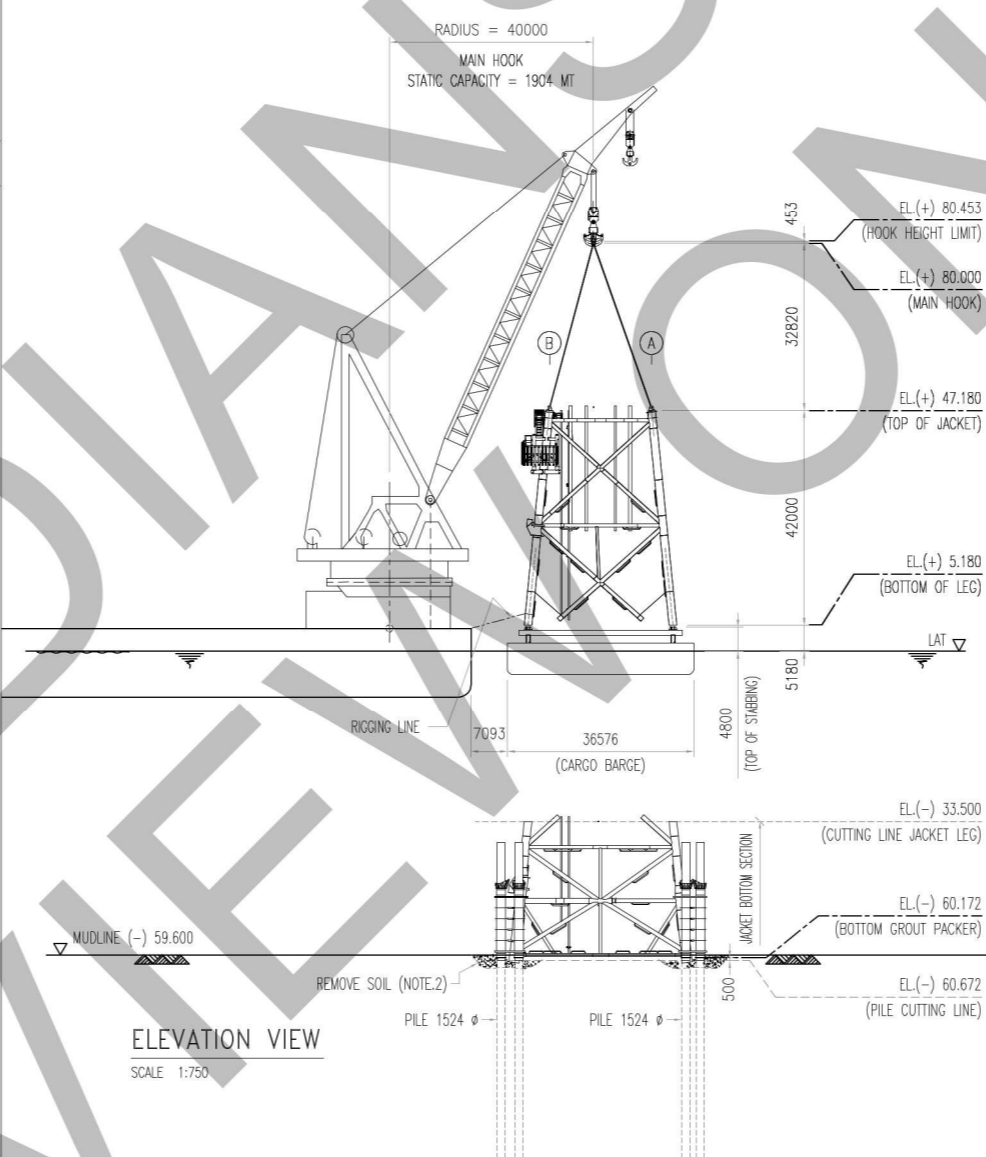
PLAN VIEW
SCALE 1:750



MOVE CARGO BARGE

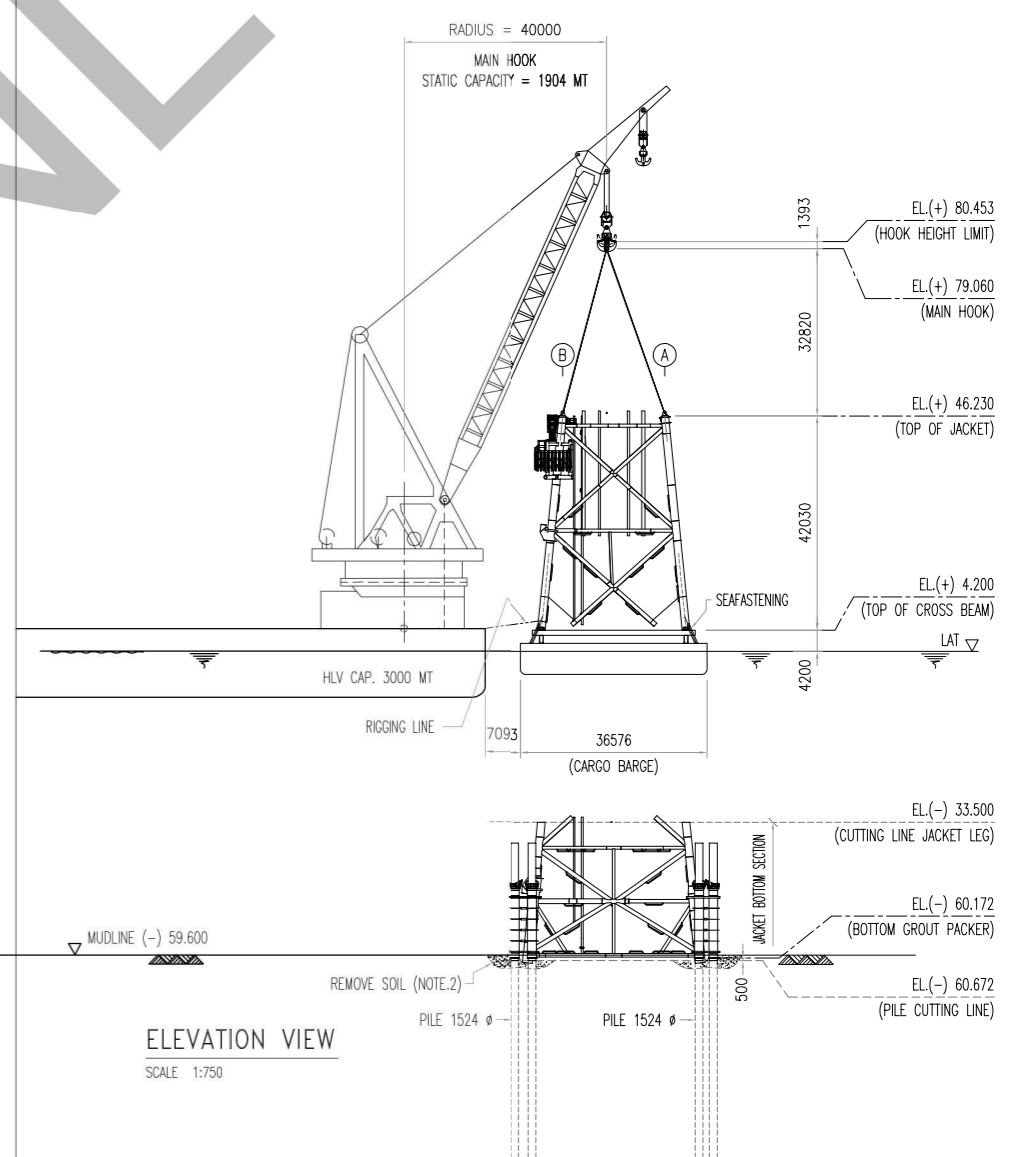


STEP-3
 1. ROTATE HLV ON POSITION.
 2. MOVE CARGO BARGE AT POSITION (BELOW JACKET TOP SECTION).
 3. SET-DOWN (JACKET TOP SECTION) ONTO GRILLAGES ON CARGO BARGE.



ELEVATION VIEW
SCALE 1:750

STEP-4
 1. INSTALL SUPPORT SEAFASTENING AND RELEASE MAIN HOOK AND (LT).
 2. COMPLETE INSTALL SUPPORT SEAFASTENING (JACKET TOP SECTION).
 3. MOVE CARGO BARGE.

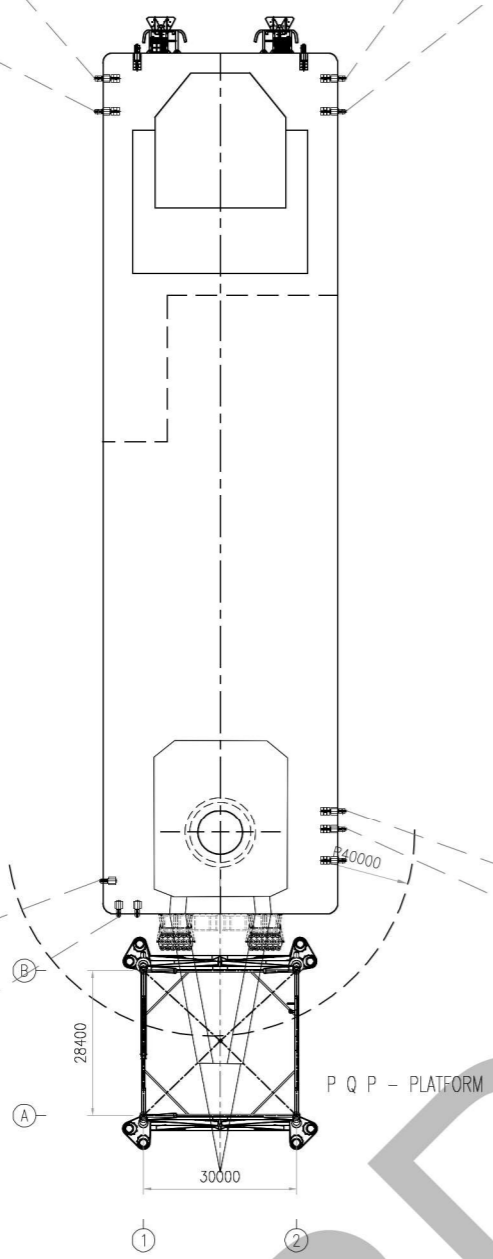
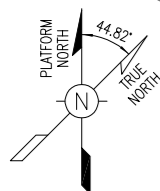


ELEVATION VIEW
SCALE 1:750

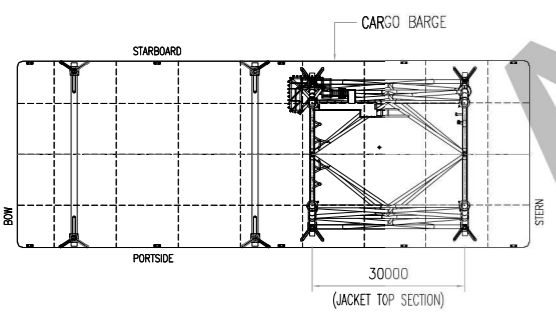
NOTES :
 1. ALL DIMENSIONS ARE IN MILLIMETERS AND ALL ELEVATIONS ARE IN METER W.R.T M.S.S UNLESS NOTED OTHERWISE.
 2. REMOVE SOIL BEFORE CUTTING PILES.
 3. THE HLV & BARGE WHICH ARE USED FOR THE SEQUENCE ARE PRELIMINARY ONLY & NEED FURTHER VERIFICATION FOR THE SCENARIO/SEQUENCES BY CONTRACTOR WITH THE CHOSEN MARINE SPREADS ON DECOMMISSIONING PHASE. ON THIS FEED PHASE, HLV EN3000 IS USED AS THE BASIS OF THIS DRAWING

0	-	APPROVED FOR CONSTRUCTION	-	-	-	-	-	-	-	-
OA	-	APPROVED FOR CONSTRUCTION (DRAFT)	-	-	-	-	-	-	-	-
C	-	ISSUED FOR APPROVAL	-	-	-	-	-	-	-	-
B	-	ISSUED FOR REVIEW	-	-	-	-	-	-	-	-
REV.	DATE	DESCRIPTION	DRN.	CHK.	LEAD ENG.	PROJ. APPR.	REVR.	APPR.	PTSE	MESL

PROJECT : PROVISION OF RUBY FACILITIES ABANDONMENT SITE RESTORATION (ASR) FEED				
TITLE : PQP JACKET LIFTING AND EMPLACEMENT SEQUENCE DRAWING				
SCALE 1 : 750	CONTRACT NO. CS-10421220494	DRAWING NO. -	SHEET NO. 2 OF 4	REV. 0



PLAN VIEW
SCALE 1:750



(JACKET TOP SECTION)

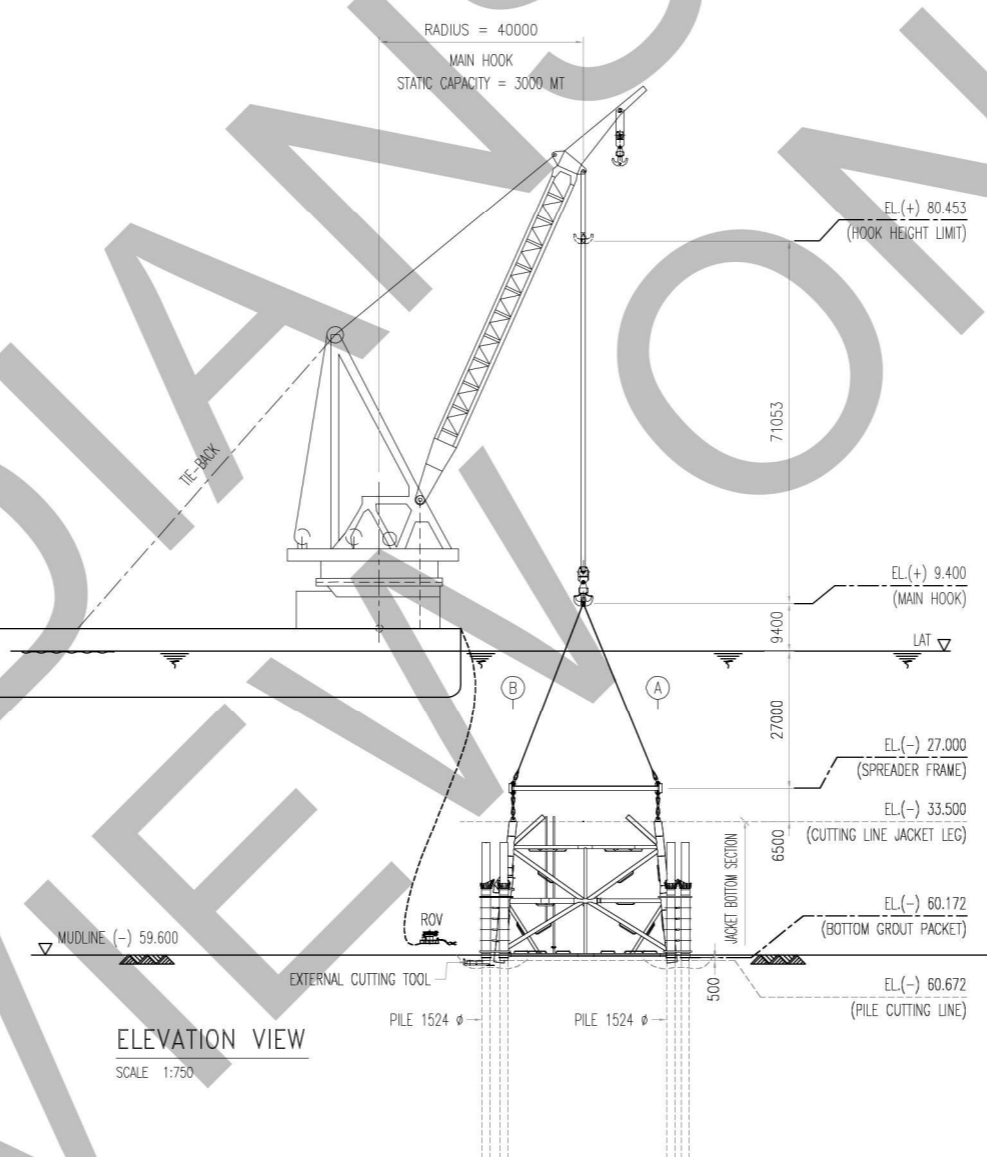
STEP-5

1. POSITION HLV AT POP PLATFORM LOCATION.
2. PREPARED ALL NECESSARY TOOLS & EQUIPMENT.
3. SET-UP INTERNAL LIFTING TOOL AT EL. (-) 33.500 (4 LOCATIONS).
4. SET-UP SPREADER FRAME C/W LIFTING GEAR TO (ILT).
5. SET-UP EXTERNAL CUTTING TOOL AT EL. (-) 60.500 (8 LOCATIONS).
6. CUT PILE AT (500 MM) BELOW GROUT PACKER WITH EXTERNAL CUTTING TOOL.
7. PREPARED LIFT-UP (JACKET BOTTOM SECTION).

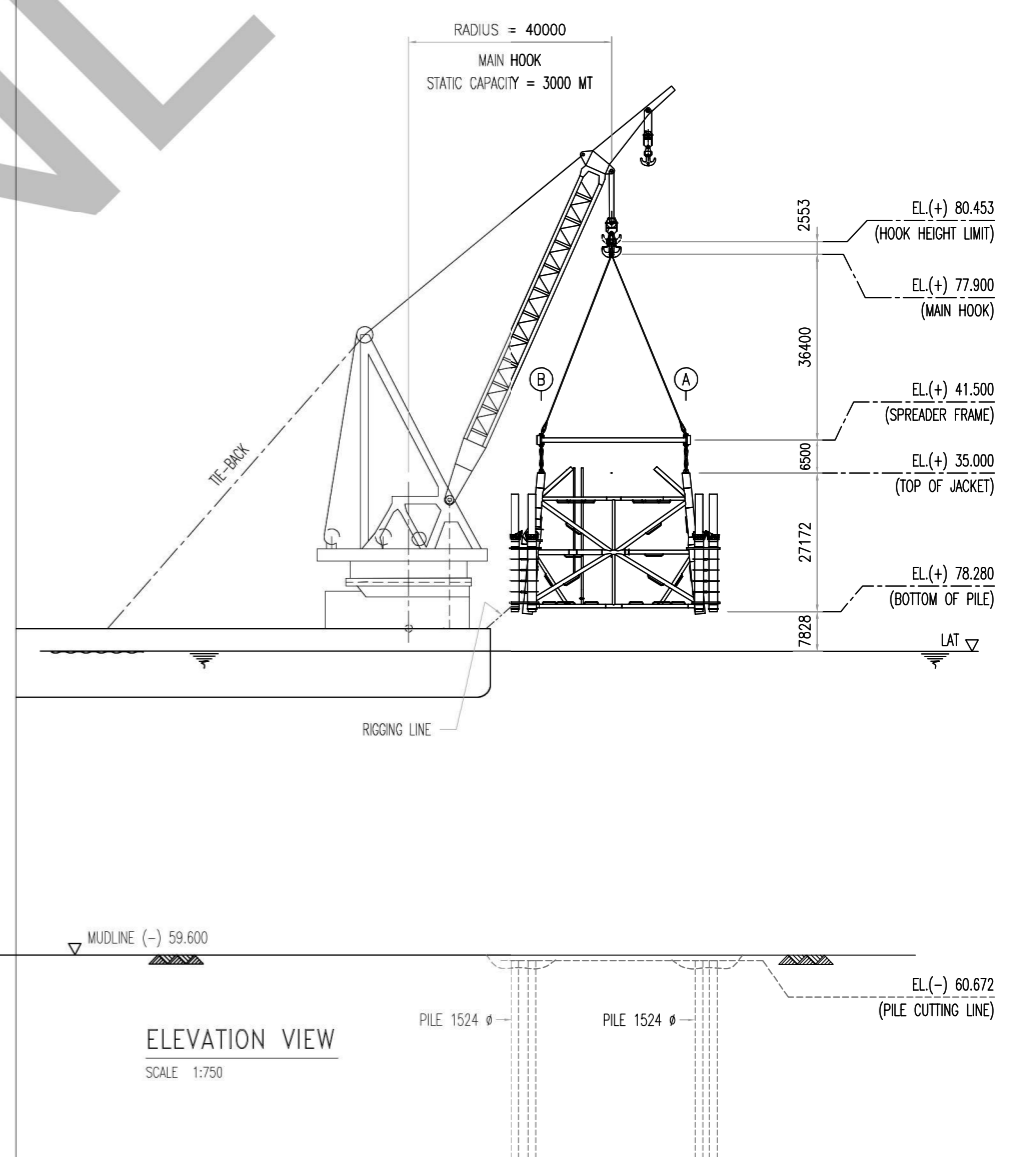
STEP-6

1. LIFT-UP SLOWLY (JACKET BOTTOM SECTION) CLEAR ABOVE M.S.L.
2. INSTALL RIGGING LINE ON BOTTOM JACKET LEGS (2 LOCATION).

POP JACKET LOWER SECTION + SPREADER FRAME FACTORED DRY WEIGHT (EXCLUDED LIFTING GEAR) = 1880.05 MT		ALLOWABLE LIFTING CAPACITY OF HLV MAIN HOOK (RADIUS 40000)		
STATIC CRANE LOAD	2044.90 MT	STATIC CRANE CAPACITY (TIE-BACK)	3000 MT	UC = 0.682
DYNAMIC CRANE LOAD (WITH D.A.F 1.15)	2351.63 MT	DYNAMIC CRANE CAPACITY	3150 MT	UC = 0.747



ELEVATION VIEW
SCALE 1:750

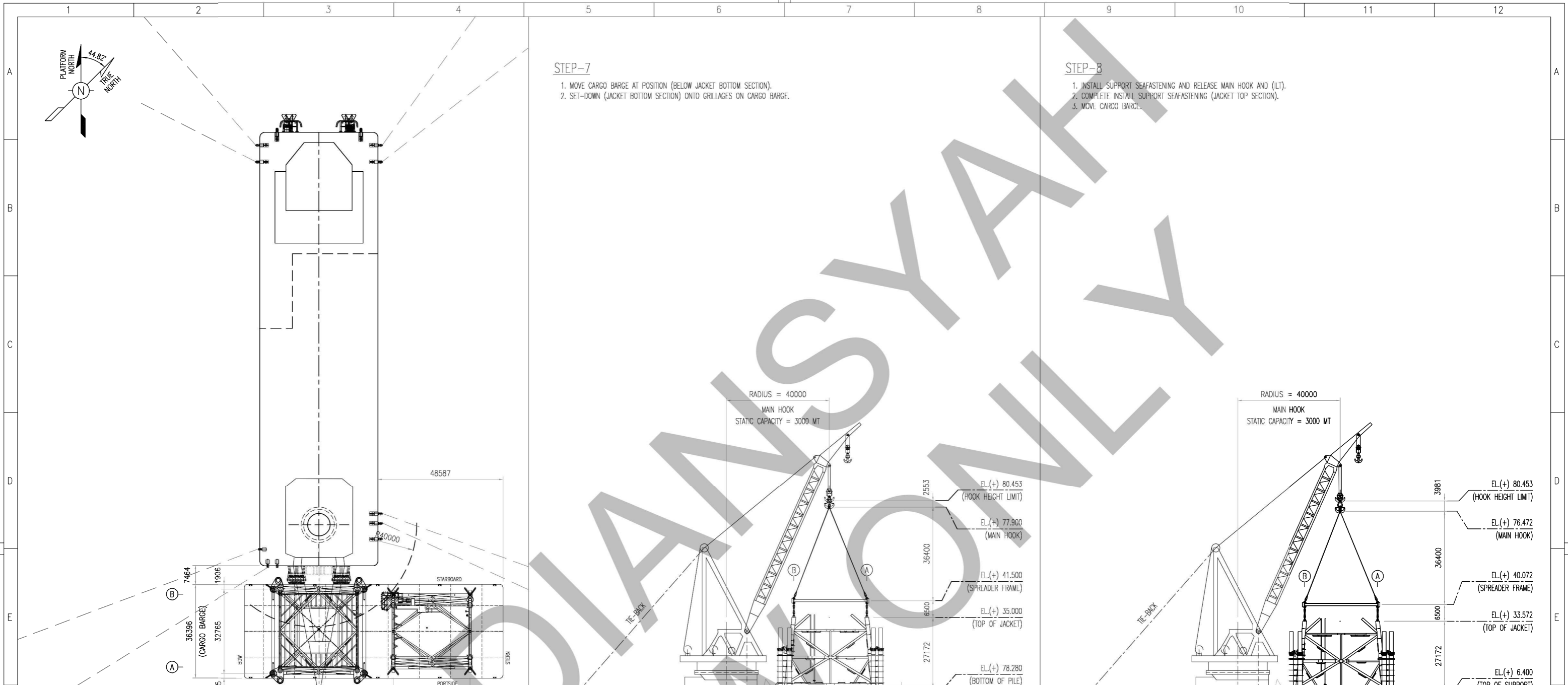
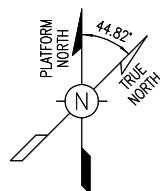


ELEVATION VIEW
SCALE 1:750

NOTES :
1. ALL DIMENSIONS ARE IN MILLIMETERS AND ALL ELEVATIONS ARE IN METER W.R.T M.S.S UNLESS NOTED OTHERWISE.
2. THE HLV & BARGE WHICH ARE USED FOR THE SEQUENCE ARE PRELIMINARY ONLY & NEED FURTHER VERIFICATION FOR THE SCENARIO/SEQUENCES BY CONTRACTOR WITH THE CHOSEN MARINE SPREADS ON DECOMMISSIONING PHASE. ON THIS FEED PHASE, HLV EN3000 IS USED AS THE BASIS OF THIS DRAWING

DRAWING No.	TITLE	REV.	DATE	DESCRIPTION	DRN.	CHK.	LEAD ENG.	PROJ. APPR.	REVR.	APPR.
	REFERENCE DRAWINGS			REVISION			PTSE			MESL
		0		APPROVED FOR CONSTRUCTION						
		0A		APPROVED FOR CONSTRUCTION (DRAFT)						
		C		ISSUED FOR APPROVAL						
		B		ISSUED FOR REVIEW						

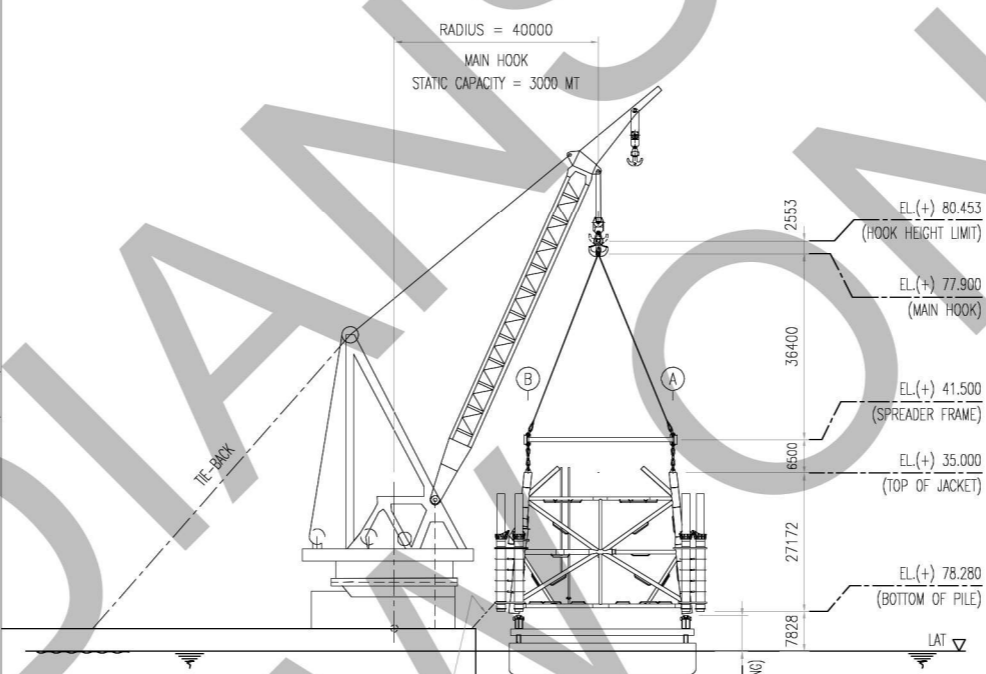
PROJECT : PROVISION OF RUBY FACILITIES ABANDONMENT SITE RESTORATION (ASR) FEED				
TITLE : PQP JACKET LIFTING AND EMPLACEMENT SEQUENCE DRAWING				
SCALE 1 : 750	CONTRACT NO. -	DRAWING NO. -	SHEET NO. 3 OF 4	REV. 0



PLAN VIEW
SCALE 1:750

STEP-7

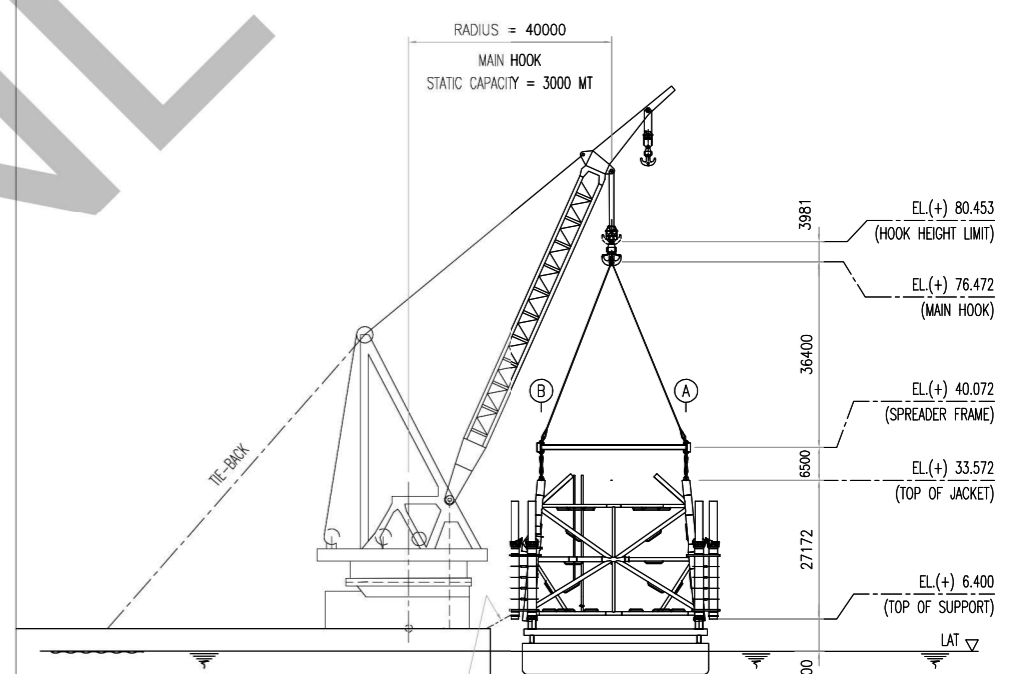
1. MOVE CARGO BARGE AT POSITION (BELOW JACKET BOTTOM SECTION).
2. SET-DOWN (JACKET BOTTOM SECTION) ONTO GRILLAGES ON CARGO BARGE.



ELEVATION VIEW
SCALE 1:750

STEP-8

1. INSTALL SUPPORT SEAFASTENING AND RELEASE MAIN HOOK AND (LT).
2. COMPLETE INSTALL SUPPORT SEAFASTENING (JACKET TOP SECTION).
3. MOVE CARGO BARGE.



ELEVATION VIEW
SCALE 1:750

NOTES :
 1. ALL DIMENSIONS ARE IN MILLIMETERS AND ALL ELEVATIONS ARE IN METER W.R.T M.S.S UNLESS NOTED OTHERWISE.
 2. THE HLV & BARGE WHICH ARE USED FOR THE SEQUENCE ARE PRELIMINARY ONLY & NEED FURTHER VERIFICATION FOR THE SCENARIO/SEQUENCES BY CONTRACTOR WITH THE CHOSEN MARINE SPREADS ON DECOMMISSIONING PHASE. ON THIS FEED PHASE, HLV EN3000 IS USED AS THE BASIS OF THIS DRAWING

REV.	DATE	DESCRIPTION	DRN.	CHK.	LEAD ENG.	PROJ. APPR.	REVR.	APPR.
0	-	APPROVED FOR CONSTRUCTION	-	-	-	-	-	-
0A	-	APPROVED FOR CONSTRUCTION (DRAFT)	-	-	-	-	-	-
C	-	ISSUED FOR APPROVAL	-	-	-	-	-	-
B	-	ISSUED FOR REVIEW	-	-	-	-	-	-

PROJECT : PROVISION OF RUBY FACILITIES ABANDONMENT SITE RESTORATION (ASR) FEED				
TITLE : PQP JACKET LIFTING AND EMPLACEMENT SEQUENCE DRAWING				
SCALE 1 : 750	CONTRACT NO. -	DRAWING NO. -	SHEET NO. 4 OF 4	REV. 0