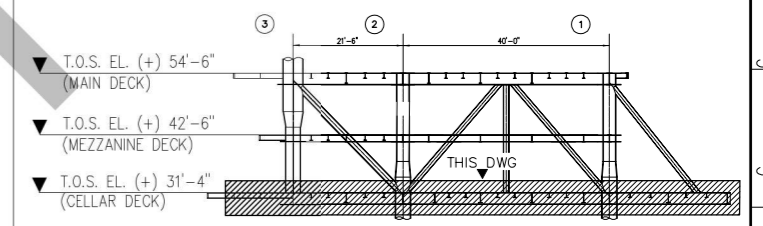
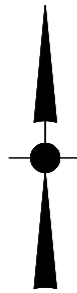


PLATFORM / TRUE NORTH



KEY ELEVATION
N.T.S

MATERIAL LIST

ITEM	DESCRIPTION	MATERIAL	LENGTH/AREA	QTY	TOTAL LG./AREA	UNIT	WEIGHT (LBS/FT)	TOTAL WEIGHT
CD16-01	W16 X 67	TYPE 1	10.5	3	31.50	FT	66.98	2109.87
CD16-02	W16 X 67	TYPE 1	11.00	6	66.00	FT	66.98	4420.68
CD16-03	W16 X 67	TYPE 1	6.16	2	12.32	FT	66.98	825.19
CD16-04	W16 X 67	TYPE 1	10.00	4	40.00	FT	66.98	2679.2
CD16-05	W16 X 67	TYPE 1	8.83	2	17.66	FT	66.98	1182.86
CD16-06	W16 X 67	TYPE 1	22.83	4	91.32	FT	66.98	6116.61
CD16-07	W16 X 67	TYPE 1	5.00	4	20.00	FT	66.98	1339.6
CD16-08	W16 X 67	TYPE 1	8.08	1	8.08	FT	66.98	541.47
CD16-09	W16 X 67	TYPE 1	6.83	1	6.83	FT	66.98	457.47
CD16-10	W16 X 67	TYPE 1	5.08	1	5.08	FT	66.98	340.25
CD16-11	W16 X 67	TYPE 1	10.00	1	10.00	FT	66.98	669.8
CD16-12	W16 X 67	TYPE 1	5.41	1	5.41	FT	66.98	362.36
CD16-13	W16 X 67	TYPE 1	4.08	2	8.16	FT	66.98	546.55
CD16-14	W16 X 67	TYPE 1	11.33	1	11.33	FT	66.98	758.88
CD16-15	W16 X 67	TYPE 1	7.50	1	7.50	FT	66.98	502.35
CD16-16	W16 X 67	TYPE 1	6.33	1	6.33	FT	66.98	423.98
CD24-01	W24 X 62	TYPE 1	11.33	4	45.32	FT	61.88	2804.40
CD24-02	W24 X 62	TYPE 1	14.16	1	14.16	FT	61.88	876.22
CD24-03	W24 X 62	TYPE 1	4.08	4	16.32	FT	61.88	1009.88
CD24-04	W24 X 62	TYPE 1	5.41	2	10.82	FT	61.88	669.54
CD27-01	W27 X 161	TYPE 1	21.5	2	43.00	FT	161.17	6930.31
CD27-02	W27 X 161	TYPE 1	40.00	3	120	FT	161.17	19340.4
CD27-03	W27 X 161	TYPE 1	22.83	2	45.66	FT	161.17	7359.02
CD27-04	W27 X 161	TYPE 1	11.33	4	45.32	FT	161.17	7304.22
CD27-05	W27 X 161	TYPE 1	30.00	4	120	FT	161.17	19340.4
TOTAL								100049

STANDARD SPEC FOR MATERIAL :
1,2,3 REFER TO WHP-SPS-001 & WHP-EDS-001

STEEL CATEGORY : 1 = PRIMARY
2 = PRIMARY (TTP)
3 = SECONDARY
NS = NON STRUCTURAL

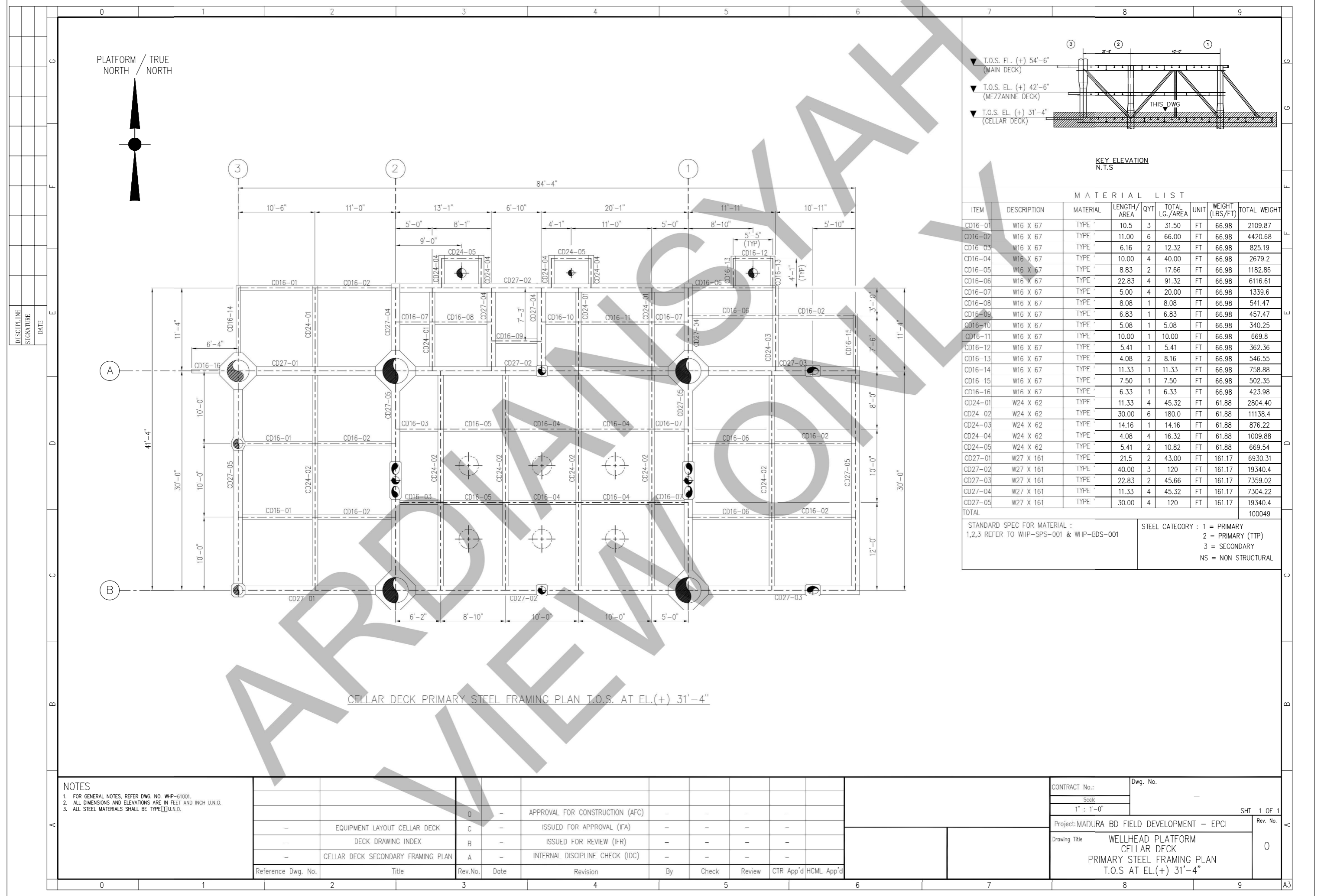
CELLAR DECK PRIMARY STEEL FRAMING PLAN T.O.S. AT EL.(+) 31'-4"

NOTES
1. FOR GENERAL NOTES, REFER DWG. NO. WHP-61001.
2. ALL DIMENSIONS AND ELEVATIONS ARE IN FEET AND INCH U.N.D.
3. ALL STEEL MATERIALS SHALL BE TYPE I U.N.D.

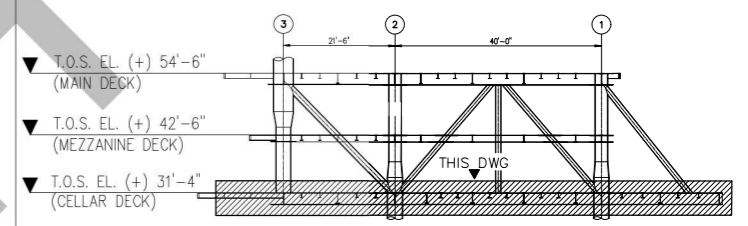
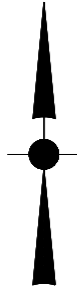
Reference Dwg. No.	Title	Rev.No.	Date	Revision	By	Check	Review	CTR App'd	HCML App'd
		0		APPROVAL FOR CONSTRUCTION (AFC)					
	EQUIPMENT LAYOUT CELLAR DECK	C		ISSUED FOR APPROVAL (IFA)					
	DECK DRAWING INDEX	B		ISSUED FOR REVIEW (IFR)					
	CELLAR DECK SECONDARY FRAMING PLAN	A		INTERNAL DISCIPLINE CHECK (IDC)					

CONTRACT No.: _____ Dwg. No.: _____
Scale: 1" : 1'-0" SHT 1 OF 1
Project: MADURA BD FIELD DEVELOPMENT - EPCI Rev. No.: 0
Drawing Title: WELLHEAD PLATFORM CELLAR DECK PRIMARY STEEL FRAMING PLAN T.O.S AT EL.(+) 31'-4"

DISCIPLINE
SIGNATURE
DATE



PLATFORM / TRUE NORTH



KEY ELEVATION
N.T.S.

MATERIAL LIST

ITEM	DESCRIPTION	MATERIAL	LENGTH/AREA	QTY	TOTAL LG./AREA	UNIT	WEIGHT (LBS/FT)	TOTAL WEIGHT
CD12-01	W12 X 40	TYPE 1	11.33	4	45.32	FT	40.12	1818.23
CD12-02	W12 X 40	TYPE 1	10.00	24	240	FT	40.12	9628.8
CD12-03	W12 X 40	TYPE 1	3.83	2	7.66	FT	40.12	307.31
CD12-04	W12 X 40	TYPE 1	4.67	3	14.01	FT	40.12	562.08
CD12-05	W12 X 40	TYPE 1	8.00	6	48.00	FT	40.12	1925.76
CD12-06	W12 X 40	TYPE 1	6.67	3	20.01	FT	40.12	802.80
CD12-07	W12 X 40	TYPE 1	1.6	4	24.64	FT	40.12	988.55
CD12-08	W12 X 30	TYPE 1	6.33	13	82.29	FT	29.89	2459.64
CD12-09	W12 X 30	TYPE 1	5.00	24	120	FT	29.89	3586.8
CD12-10	W12 X 30	TYPE 1	10.00	2	20.00	FT	29.89	597.8
CD12-11	W12 X 30	TYPE 1	4.00	2	8.00	FT	29.89	239.12
CD12-12	W12 X 30	TYPE 1	11.33	1	11.33	FT	29.89	338.65
CD12-13	W12 X 30	TYPE 1	35.00	1	35.00	FT	29.89	1046.15
CD12-14	W12 X 30	TYPE 1	21.50	1	21.50	FT	29.89	642.63
CD12-15	W12 X 30	TYPE 1	62.83	1	62.83	FT	29.89	1877.98
CD12-16	W12 X 30	TYPE 1	5.00	2	10.00	FT	29.89	298.9
CD12-17	W12 X 30	TYPE 1	4.67	1	4.67	FT	29.89	139.58
CD12-18	W12 X 40	TYPE 1	7.50	4	30.00	FT	40.12	1203.6
CD12-19	W12 X 40	TYPE 1	4.75	1	4.75	FT	40.12	190.57
CD06-01	6 5/8" x 3/8" WT	TYPE 1	14.97	1	14.97	FT	25.06	375.14
CD06-02	6 5/8" x 3/8" WT	TYPE 1	15.55	1	15.55	FT	25.06	389.68
CD06-03	6 5/8" x 3/8" WT	TYPE 1	13.78	1	13.78	FT	25.06	345.32
CD06-04	6 5/8" x 3/8" WT	TYPE 1	12.33	1	12.33	FT	25.06	308.98
CD06-05	6 5/8" x 3/8" WT	TYPE 1	13.23	1	13.23	FT	25.06	331.54
CD06-06	6 5/8" x 3/8" WT	TYPE 1	12.10	1	12.10	FT	25.06	303.22
CD06-07	6 5/8" x 3/8" WT	TYPE 1	9.57	1	9.57	FT	25.06	239.82
CD06-08	6 5/8" x 3/8" WT	TYPE 1	11.00	1	11.00	FT	25.06	275.66
CD06-09	6 5/8" x 3/8" WT	TYPE 1	12.32	1	12.32	FT	25.06	308.73
CD06-10	6 5/8" x 3/8" WT	TYPE 1	9.44	1	9.44	FT	25.06	236.56
CD06-11	6 5/8" x 3/8" WT	TYPE 1	13.84	1	13.84	FT	25.06	346.83
CD06-12	6 5/8" x 3/8" WT	TYPE 1	12.37	1	12.37	FT	25.06	309.99
CD06-13	6 5/8" x 3/8" WT	TYPE 1	14.74	2	29.48	FT	25.06	738.76
CD06-14	6 5/8" x 3/8" WT	TYPE 1	14.10	2	28.20	FT	25.06	706.62
CD06-15	6 5/8" x 3/8" WT	TYPE 1	13.19	1	13.19	FT	25.06	330.54
CD06-16	6 5/8" x 3/8" WT	TYPE 1	14.40	1	14.40	FT	25.06	360.86
CD06-17	6 5/8" x 3/8" WT	TYPE 1	14.00	1	14.00	FT	25.06	350.84
TOTAL								34914

STANDARD SPEC FOR MATERIAL :
1,2,3 REFER TO WHP-SPS-001 & WHP-BDS-001

STEEL CATEGORY : 1 = PRIMARY
2 = PRIMARY(TTP)
3 = SECONDARY
NS = NON STRUCTURAL

CELLAR DECK SECONDARY STEEL FRAMING PLAN T.O.S AT EL. (+) 31'-4"
 PLAN BRACES PLAN AT EL. (+) 29'-10 1/4 (W24 TO W24 & W24 TO PIPE)
 PLAN BRACES PLAN AT EL. (+) 29'-6 7/8 (W27 TO W27 & W27 TO PIPE)

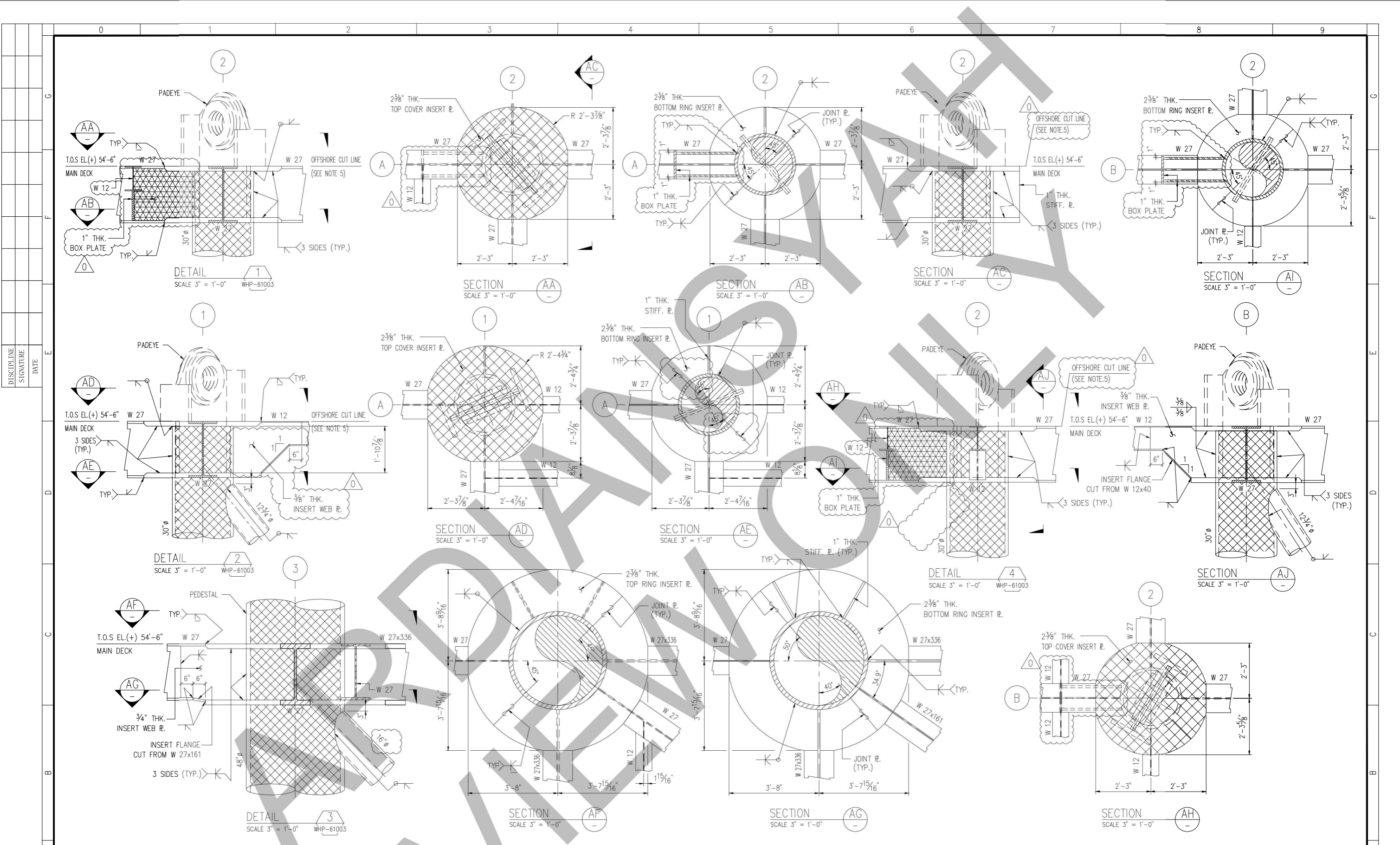
NOTES:
 1. FOR GENERAL NOTES, REFER DWG. NO. WHP-61001.
 2. ALL DIMENSIONS AND ELEVATIONS ARE IN FEET AND INCH U.N.O.
 3. ALL STEEL MATERIALS SHALL BE TYPE 1 U.N.O.

Reference Dwg. No.	Title	Rev.No.	Date	Revision	By	Check	Review	CTR App'd	HCML App'd
-	EQUIPMENT LAYOUT CELLAR DECK	D	-	APPROVAL FOR CONSTRUCTION (AFC)	-	-	-	-	-
-	DECK DRAWING INDEX	C	-	ISSUED FOR APPROVAL (IFA)	-	-	-	-	-
-	CELLAR DECK PRIMARY FRAMING PLAN	B	-	ISSUED FOR REVIEW (IFR)	-	-	-	-	-
-	SECTION AND DECK CONNECTION DETAIL	A	-	INTERNAL DISCIPLINE CHECK (IDC)	-	-	-	-	-

CONTRACT No.: -
 Scale: 1" = 1'-0"
 Project: MANJURA BD FIELD DEVELOPMENT - EPCI
 Drawing Title: WELLHEAD PLATFORM CELLAR DECK SECONDARY STEEL FRAMING PLAN T.O.S AT EL.(+) 31'-4"

Dwg. No.: -
 SHT 1 OF 1
 Rev. No.: 0

DISCIPLINE
SIGNATURE
DATE



NOTES:

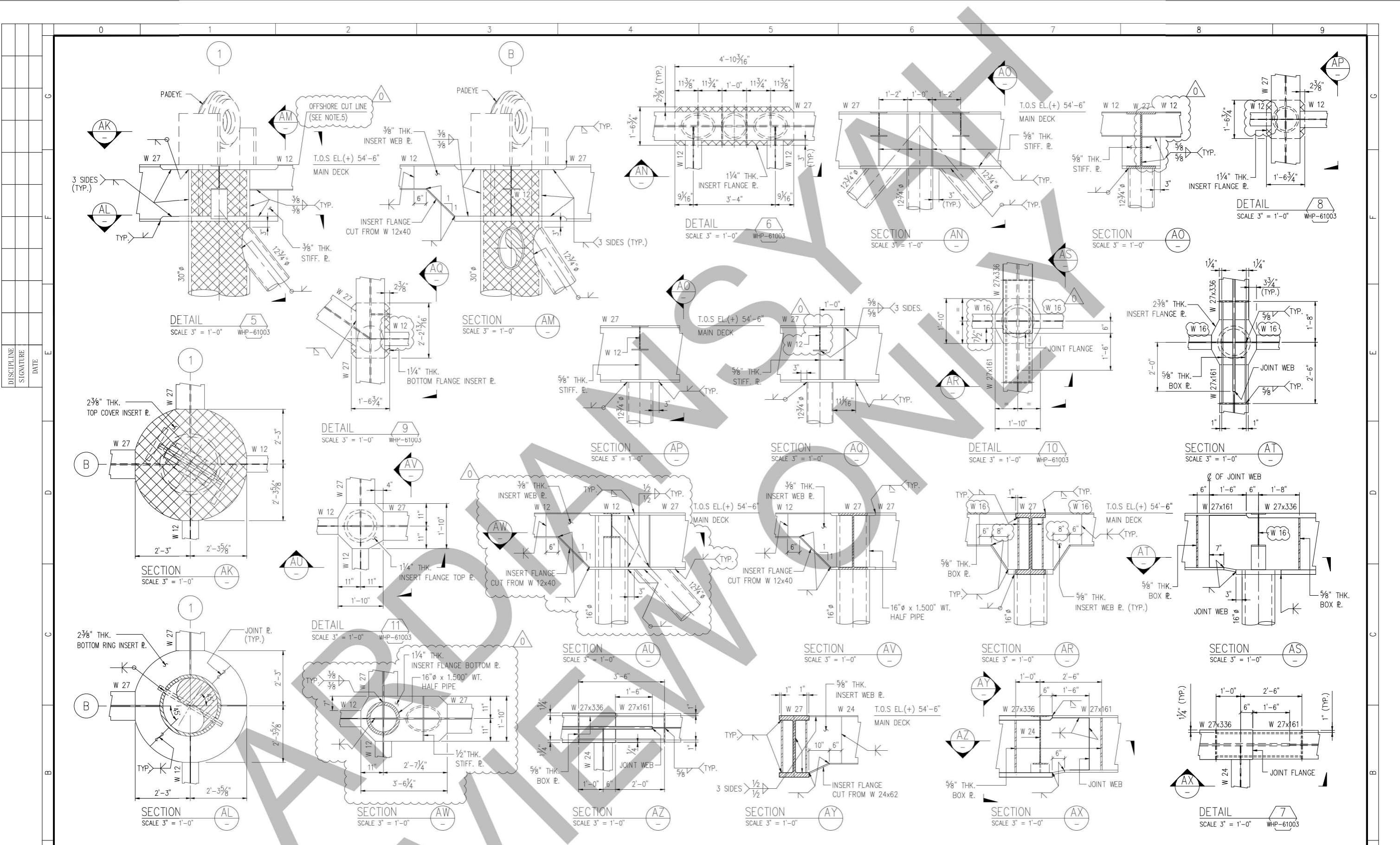
- FOR GENERAL NOTES, REFER DWG. NO. WHP-61001
- ALL DIMENSIONS AND ELEVATIONS ARE IN FEET AND INCH U.N.D.
- ALL MATERIALS SHALL BE TYPE U.S.A. UNLESS OTHERWISE SPECIFIED
- ALL MATERIALS DENOTED BY SHADING SHALL BE TYPE U.S.A. UNLESS OTHERWISE SPECIFIED
- PADEYE & STIFFENER PLATE ABOVE TOP FLANGE TO BE CUT-OFF AFTER DECK INSTALLATION & FLANGE PLATE TO BE FLUSH GRINDED

Reference Dwg. No.	Title	Rev.No.	Date	Revision	By	Check	Review	CTR App'd	HCML App'd
-	TRUSS ELEVATION AT ROW A-B & ROW C	-	-	-	-	-	-	-	-
-	TRUSS ELEVATION AT ROW 1-2 & ROW 3	0	-	APPROVED FOR CONSTRUCTION (AFC)	-	-	-	-	-
-	MAIN DECK SECONDARY FRAMING PLAN	C	-	ISSUED FOR APPROVAL (IFA)	-	-	-	-	-
-	MAIN DECK PRIMARY FRAMING PLAN	B	-	ISSUED FOR REVIEW (IFR)	-	-	-	-	-
-	DECK GENERAL NOTES	A	-	INTERNAL DISCIPLINE CHECK (IDC)	-	-	-	-	-

CONTRACT No.:	-	Dwg. No.:	-
Scale:	3" = 1'-0"	SHEET 1 OF 8	
Project:	MADURA BD FIELD DEVELOPMENT - EPCI	Rev. No.:	0
Drawing Title:	WELLHEAD PLATFORM SECTION AND DECK CONNECTION DETAILS		

DISCIPLINE
SIGNATURE
DATE

0



NOTES:

1. FOR GENERAL NOTES, REFER DWG. NO. WHP-61001
2. ALL DIMENSIONS AND ELEVATIONS ARE IN FEET AND INCH U.N.D
3. ALL MATERIALS SHALL BE TYPE U.S.A.
4. ALL MATERIALS DENOTED BY SYMBOL SHALL BE TYPE U.S.A.
5. PADEYE & STIFFENER PLATE ABOVE TOP FLANGE TO BE CUT-OFF AFTER DECK INSTALLATION & FLANGE PLATE TO BE FLUSH GRINDED

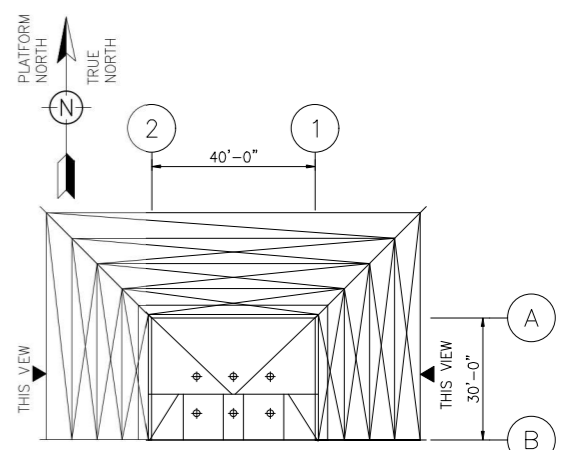
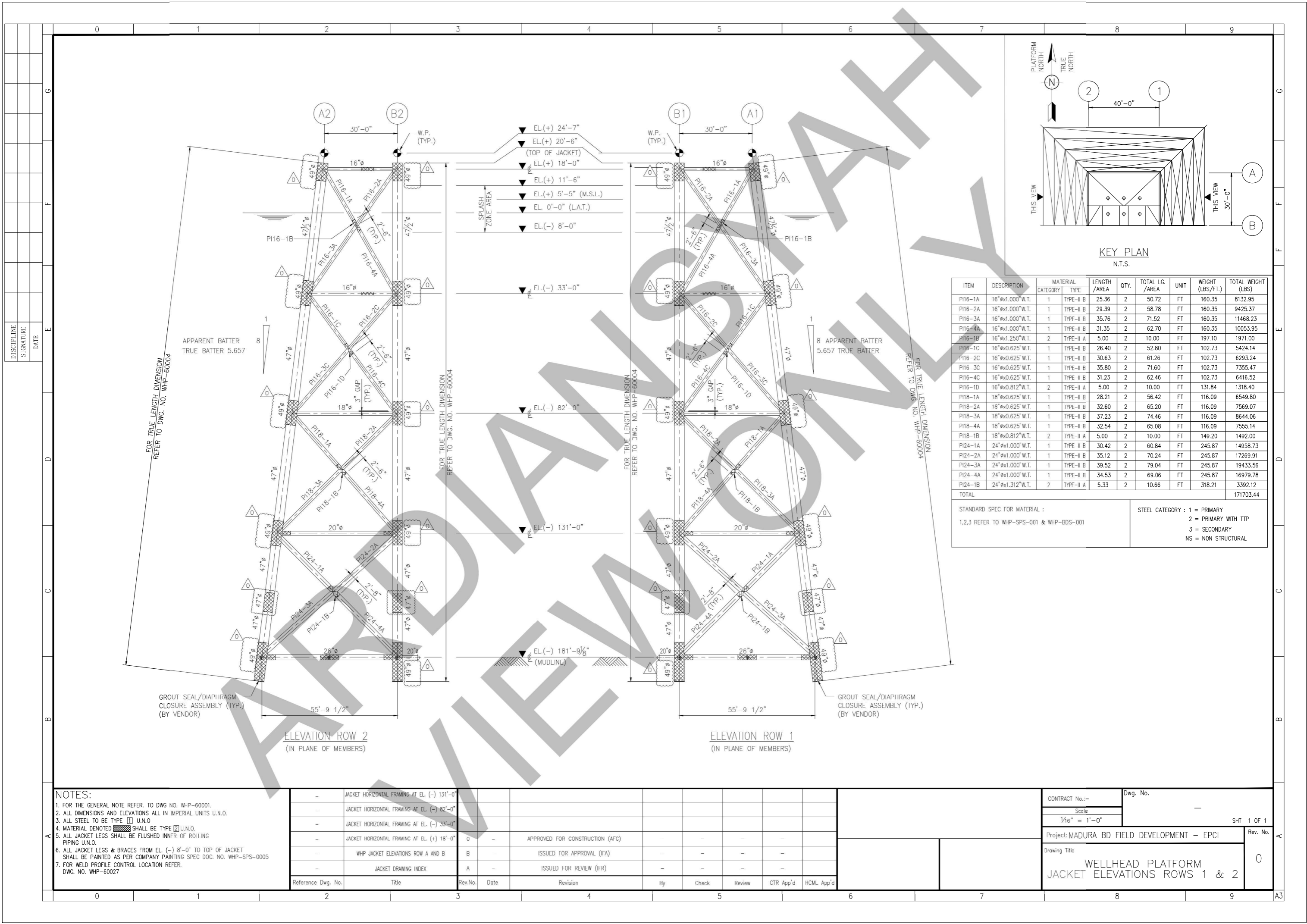
Reference Dwg. No.	Title	Rev.No.	Date	Revision	By	Check	Review	CTR App'd	HCML App'd
-	TRUSS ELEVATION AT ROW A-B & ROW C	-	-	-	-	-	-	-	-
-	TRUSS ELEVATION AT ROW 1-2 & ROW 3	0	-	APPROVED FOR CONSTRUCTION (AFC)	-	-	-	-	-
-	MAIN DECK SECONDARY FRAMING PLAN	C	-	ISSUED FOR APPROVAL (IFA)	-	-	-	-	-
-	MAIN DECK PRIMARY FRAMING PLAN	B	-	ISSUED FOR REVIEW (IFR)	-	-	-	-	-
-	DECK GENERAL NOTES	A	-	INTERNAL DISCIPLINE CHECK (IDC)	-	-	-	-	-

CONTRACT No.:	-	Dwg. No.	-
Scale	-		
SCALE :	3"=1'-0"		
Project:	MADURA BD FIELD DEVELOPMENT - EPCI	SHEET	2 OF 8
Drawing Title	WELLHEAD PLATFORM SECTION AND DECK CONNECTION DETAILS	Rev. No.	0

DISCIPLINE
SIGNATURE
DATE

A

C



ITEM	DESCRIPTION	MATERIAL		LENGTH / AREA	QTY.	TOTAL LG. / AREA	UNIT	WEIGHT (LBS/FT.)	TOTAL WEIGHT (LBS)
		CATEGORY	TYPE						
P116-1A	16" x 1.000" W.T.	1	TYPE-II B	25.36	2	50.72	FT	160.35	8132.95
P116-2A	16" x 1.000" W.T.	1	TYPE-II B	29.39	2	58.78	FT	160.35	9425.37
P116-3A	16" x 1.000" W.T.	1	TYPE-II B	35.76	2	71.52	FT	160.35	11468.23
P116-4A	16" x 1.000" W.T.	1	TYPE-II B	31.35	2	62.70	FT	160.35	10053.95
P116-1B	16" x 1.250" W.T.	2	TYPE-II A	5.00	2	10.00	FT	197.10	1971.00
P116-1C	16" x 0.625" W.T.	1	TYPE-II B	26.40	2	52.80	FT	102.73	5424.14
P116-2C	16" x 0.625" W.T.	1	TYPE-II B	30.63	2	61.26	FT	102.73	6293.24
P116-3C	16" x 0.625" W.T.	1	TYPE-II B	35.80	2	71.60	FT	102.73	7355.47
P116-4C	16" x 0.625" W.T.	1	TYPE-II B	31.23	2	62.46	FT	102.73	6416.52
P116-1D	16" x 0.812" W.T.	2	TYPE-II A	5.00	2	10.00	FT	131.84	1318.40
P118-1A	18" x 0.625" W.T.	1	TYPE-II B	28.21	2	56.42	FT	116.09	6549.80
P118-2A	18" x 0.625" W.T.	1	TYPE-II B	32.60	2	65.20	FT	116.09	7569.07
P118-3A	18" x 0.625" W.T.	1	TYPE-II B	37.23	2	74.46	FT	116.09	8644.06
P118-4A	18" x 0.625" W.T.	1	TYPE-II B	32.54	2	65.08	FT	116.09	7555.14
P118-1B	18" x 0.812" W.T.	2	TYPE-II A	5.00	2	10.00	FT	149.20	1492.00
P124-1A	24" x 1.000" W.T.	1	TYPE-II B	30.42	2	60.84	FT	245.87	14958.73
P124-2A	24" x 1.000" W.T.	1	TYPE-II B	35.12	2	70.24	FT	245.87	17269.91
P124-3A	24" x 1.000" W.T.	1	TYPE-II B	39.52	2	79.04	FT	245.87	19433.56
P124-4A	24" x 1.000" W.T.	1	TYPE-II B	34.53	2	69.06	FT	245.87	16979.78
P124-1B	24" x 1.312" W.T.	2	TYPE-II A	5.33	2	10.66	FT	318.21	3392.12
TOTAL									171703.44

STANDARD SPEC FOR MATERIAL :
 1,2,3 REFER TO WHP-SPS-001 & WHP-BDS-001

STEEL CATEGORY : 1 = PRIMARY
 2 = PRIMARY WITH TTP
 3 = SECONDARY
 NS = NON STRUCTURAL

- NOTES:**
- FOR THE GENERAL NOTE REFER TO DWG NO. WHP-60001.
 - ALL DIMENSIONS AND ELEVATIONS ALL IN IMPERIAL UNITS U.N.O.
 - ALL STEEL TO BE TYPE [] U.N.O.
 - MATERIAL DENOTED [] SHALL BE TYPE [] U.N.O.
 - ALL JACKET LEGS SHALL BE FLUSHED INNER OF ROLLING PIPING U.N.O.
 - ALL JACKET LEGS & BRACES FROM EL. (-) 8'-0" TO TOP OF JACKET SHALL BE PAINTED AS PER COMPANY PAINTING SPEC DOC. NO. WHP-SPS-0005
 - FOR WELD PROFILE CONTROL LOCATION REFER DWG. NO. WHP-60027

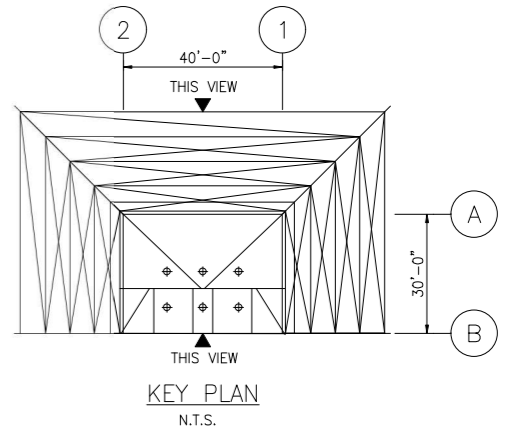
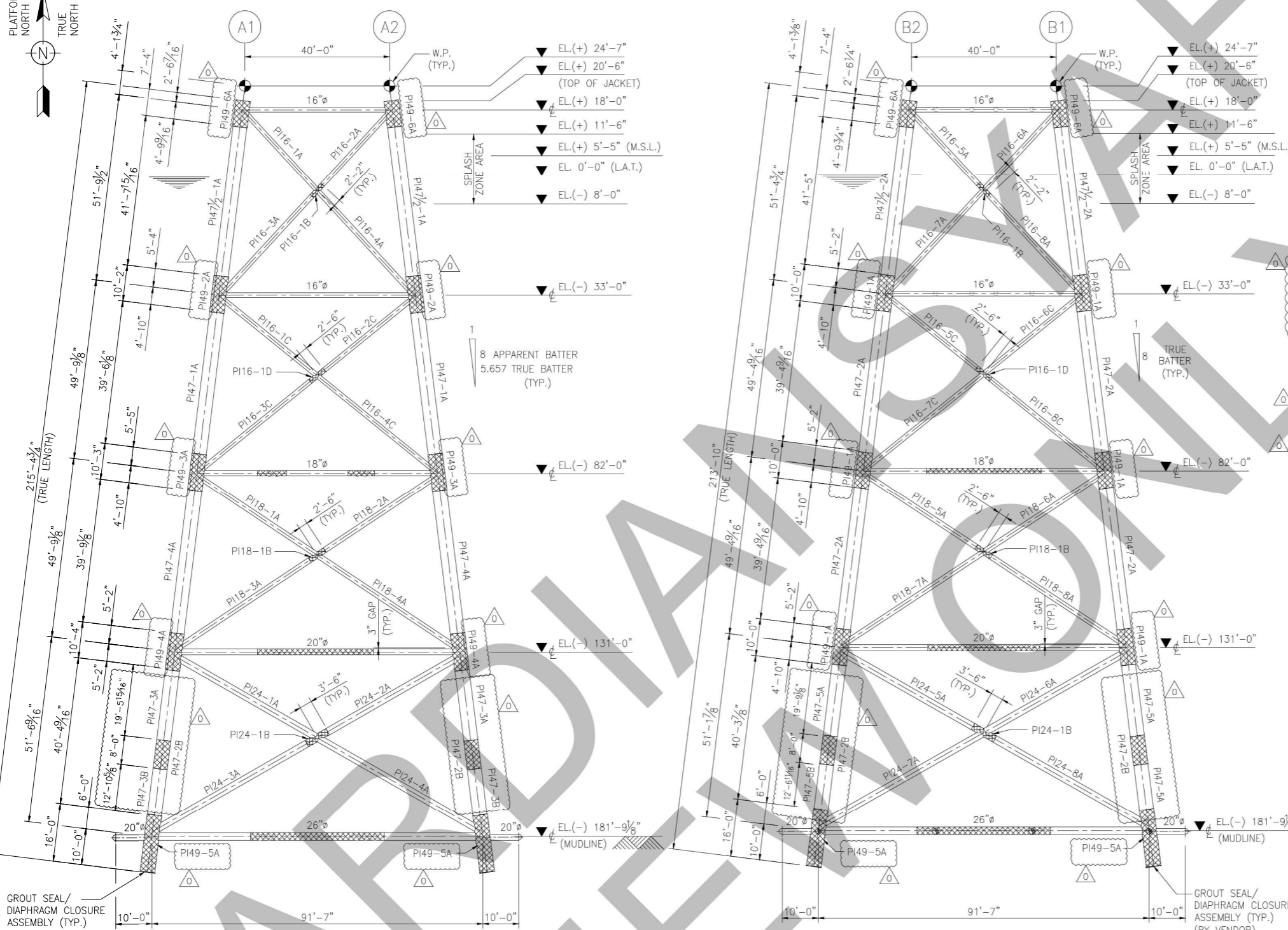
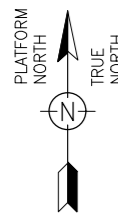
Reference Dwg. No.	Title	Rev.No.	Date	Revision	By	Check	Review	CTR App'd	HCML App'd
-	JACKET HORIZONTAL FRAMING AT EL. (-) 131'-0"								
-	JACKET HORIZONTAL FRAMING AT EL. (-) 82'-0"								
-	JACKET HORIZONTAL FRAMING AT EL. (-) 33'-0"								
-	JACKET HORIZONTAL FRAMING AT EL. (+) 18'-0"	0		APPROVED FOR CONSTRUCTION (AFC)					
-	WHP JACKET ELEVATIONS ROW A AND B	B		ISSUED FOR APPROVAL (IFA)					
-	JACKET DRAWING INDEX	A		ISSUED FOR REVIEW (IFR)					

CONTRACT No.:-
 Scale
 1/16" = 1'-0"

Dwg. No. -
 SHT. 1 OF 1

Project: MADURA BD FIELD DEVELOPMENT - EPCI
 Rev. No. 0

Drawing Title
**WELLHEAD PLATFORM
 JACKET ELEVATIONS ROWS 1 & 2**



ITEM	DESCRIPTION	MATERIAL CATEGORY	TYPE	LENGTH / AREA	QTY.	TOTAL LG. / AREA	UNIT	WEIGHT (LBS./FT.)	TOTAL WEIGHT (LBS)
PI49-1A	49" x 2.000" W.T.	2	TYPE-II A	10.00	6	60.00	FT	1004.88	60292.75
PI49-2A	49" x 2.000" W.T.	2	TYPE-II A	10.17	2	20.33	FT	1004.88	20431.20
PI49-3A	49" x 2.000" W.T.	2	TYPE-II A	10.25	2	20.50	FT	1004.88	20600.02
PI49-4A	49" x 2.000" W.T.	2	TYPE-II A	10.33	2	20.66	FT	1004.88	20760.80
PI49-5A	49" x 2.000" W.T.	2	TYPE-II A	16.00	4	64.00	FT	1004.88	64312.24
PI49-6A	49" x 2.000" W.T.	2	TYPE-II A	7.33	4	29.33	FT	1004.88	29476.44
PI47 1/2-1A	47 1/2" x 1.250" W.T.	1	TYPE-II B	41.83	2	83.32	FT	618.02	51495.76
PI47 1/2-2A	47 1/2" x 1.250" W.T.	1	TYPE-II B	41.42	2	82.84	FT	618.02	51197.37
PI47-1A	47" x 1.000" W.T.	1	TYPE-II B	39.51	2	79.02	FT	491.75	38858.02
PI47-2A	47" x 1.000" W.T.	1	TYPE-II B	39.38	4	157.52	FT	491.75	77460.33
PI47-3A	47" x 1.000" W.T.	1	TYPE-II B	19.49	2	38.99	FT	491.75	19173.10
PI47-3B	47" x 1.000" W.T.	1	TYPE-II B	12.89	2	25.77	FT	491.75	12672.79
PI47-4A	47" x 1.000" W.T.	1	TYPE-II B	39.38	2	78.76	FT	491.75	39103.90
PI47-5A	47" x 1.000" W.T.	1	TYPE-II B	19.76	2	39.52	FT	491.75	19434.34
PI47-5B	47" x 1.000" W.T.	1	TYPE-II B	12.56	2	25.11	FT	491.75	12350.08
PI47-2B	47" x 1.000" W.T.	2	TYPE-II A	8.00	4	32.00	FT	491.75	15735.97
PI16-1A	16" x 1.000" W.T.	1	TYPE-II B	30.65	1	30.65	FT	160.35	4914.73
PI16-2A	16" x 1.000" W.T.	1	TYPE-II B	28.48	1	28.48	FT	160.35	4566.77
PI16-3A	16" x 1.000" W.T.	1	TYPE-II B	38.00	1	38.00	FT	160.35	6093.30
PI16-4A	16" x 1.000" W.T.	1	TYPE-II B	40.16	1	40.16	FT	160.35	6439.66
PI16-5A	16" x 1.000" W.T.	1	TYPE-II B	28.36	1	28.36	FT	160.35	4547.53
PI16-6A	16" x 1.000" W.T.	1	TYPE-II B	30.52	1	30.52	FT	160.35	4893.88
PI16-7A	16" x 1.000" W.T.	1	TYPE-II B	39.99	1	39.99	FT	160.35	6412.40
PI16-8A	16" x 1.000" W.T.	2	TYPE-II A	37.82	1	37.82	FT	160.35	6064.44
PI16-1B	16" x 1.250" W.T.	2	TYPE-II A	4.32	2	8.64	FT	197.10	1702.94
PI16-1C	16" x 0.625" W.T.	1	TYPE-II B	35.03	1	35.03	FT	102.73	3598.63
PI16-2C	16" x 0.625" W.T.	1	TYPE-II B	32.53	1	32.53	FT	102.73	3341.81
PI16-3C	16" x 0.625" W.T.	1	TYPE-II B	40.36	1	40.36	FT	102.73	4146.18
PI16-4C	16" x 0.625" W.T.	1	TYPE-II B	42.86	1	42.86	FT	102.73	4403.01
PI16-5C	16" x 0.625" W.T.	1	TYPE-II B	32.42	1	32.42	FT	102.73	3330.51
PI16-6C	16" x 0.625" W.T.	1	TYPE-II B	34.92	1	34.92	FT	102.73	3587.33
PI16-7C	16" x 0.625" W.T.	1	TYPE-II B	42.72	1	42.72	FT	102.73	4388.63
PI16-8C	16" x 0.625" W.T.	1	TYPE-II B	40.22	1	40.22	FT	102.73	4131.80
PI16-1D	16" x 0.812" W.T.	2	TYPE-II A	5.00	2	10.00	FT	131.84	1318.39
PI18-1A	18" x 0.625" W.T.	1	TYPE-II B	40.05	1	40.05	FT	116.09	4649.40
PI18-2A	18" x 0.625" W.T.	1	TYPE-II B	37.55	1	37.55	FT	116.09	4359.18
PI18-3A	18" x 0.625" W.T.	1	TYPE-II B	44.22	1	44.22	FT	116.09	5133.50
PI18-4A	18" x 0.625" W.T.	1	TYPE-II B	47.22	1	47.22	FT	116.09	5481.77
PI18-5A	18" x 0.625" W.T.	1	TYPE-II B	37.45	1	37.45	FT	116.09	4347.57
PI18-6A	18" x 0.625" W.T.	1	TYPE-II B	39.95	1	39.95	FT	116.09	4637.80
PI18-7A	18" x 0.625" W.T.	1	TYPE-II B	47.10	1	47.10	FT	116.09	5467.84
PI18-8A	18" x 0.625" W.T.	1	TYPE-II B	44.60	1	44.60	FT	116.09	5177.61
PI18-1B	18" x 0.812" W.T.	2	TYPE-II A	5.00	2	10.00	FT	149.20	1492.00
PI24-1A	24" x 1.000" W.T.	1	TYPE-II B	45.60	1	45.60	FT	245.87	11211.67
PI24-2A	24" x 1.000" W.T.	1	TYPE-II B	42.10	1	42.10	FT	245.87	10351.13
PI24-3A	24" x 1.000" W.T.	1	TYPE-II B	49.06	1	49.06	FT	245.87	12062.38
PI24-4A	24" x 1.000" W.T.	1	TYPE-II B	52.56	1	52.56	FT	245.87	12922.93
PI24-5A	24" x 1.000" W.T.	1	TYPE-II B	42.01	1	42.01	FT	245.87	10329.00
PI24-6A	24" x 1.000" W.T.	1	TYPE-II B	45.51	1	45.51	FT	245.87	11189.54
PI24-7A	24" x 1.000" W.T.	1	TYPE-II B	52.45	1	52.45	FT	245.87	12895.88
PI24-8A	24" x 1.000" W.T.	1	TYPE-II B	48.95	1	48.95	FT	245.87	12035.34
PI24-1B	24" x 1.312" W.T.	2	TYPE-II A	7.00	2	14.00	FT	318.21	4454.94
TOTAL									769267.29

STANDARD SPEC FOR MATERIAL :
1,2,3 REFER TO WHP-SPS-001 & WHP-BDS-001

STEEL CATEGORY : 1 = PRIMARY
2 = PRIMARY WITH TTP
3 = SECONDARY
NS = NON STRUCTURAL

- NOTES:**
- FOR THE GENERAL NOTE REFER TO DWG NO. WHP-60001.
 - ALL DIMENSIONS AND ELEVATIONS ALL IN IMPERIAL UNITS U.N.O.
 - ALL STEEL TO BE TYPE [] U.N.O.
 - MATERIAL DENOTED [] SHALL BE TYPE [] U.N.O.
 - ALL JACKET LEGS SHALL BE FLUSHED INNER OF ROLLING PIPING U.N.O.
 - ALL JACKET LEGS & BRACES FROM EL. (-) 8'-0" TO TOP OF JACKET SHALL BE PAINTED AS PER COMPANY PAINTING SPEC DOC. NO. WHP-SPS-0005
 - FOR WELD PROFILE CONTROL LOCATION REFER DWG. NO. WHP-60027

-	JACKET HORIZONTAL FRAMING AT EL. (-) 131'-0"								
-	JACKET HORIZONTAL FRAMING AT EL. (-) 82'-0"								
-	JACKET HORIZONTAL FRAMING AT EL. (-) 33'-0"								
-	JACKET HORIZONTAL FRAMING AT EL. (+) 18'-0"	0	-	APPROVED FOR CONSTRUCTION (AFC)					
-	WHP JACKET ELEVATIONS ROW 1 AND 2	B	-	ISSUED FOR APPROVAL (IFA)					
-	JACKET DRAWING INDEX	A	-	ISSUED FOR REVIEW (IFR)					
Reference Dwg. No.	Title	Rev.No.	Date	Revision	By	Check	Review	CTR App'd	HCML App'd

CONTRACT No.: - Dwg. No. -

Scale: 1/16" = 1'-0"

Project: MADURA BD FIELD DEVELOPMENT - EPCI

Drawing Title: WELLHEAD PLATFORM JACKET ELEVATIONS ROWS A & B

SHT. 1 OF 1

Rev. No. 0